

MECHANICAL SPECIFICATIONS

ALL MATERIALS AND INSTALLATION SHALL COMPLY WITH THE LATEST EDITIONS OF ALL APPLICABLE LOCAL, STATE, AND NATIONAL CODES AND ORDINANCES. IN CASE OF CONFLICT BETWEEN THE REFERENCED CODES AND ORDINANCES, THE MORE STRINGENT REQUIREMENTS SHALL GOVERN.

VERIFY ALL SECTIONS AND ELEVATIONS PRIOR TO DUCTWORK FABRICATIONS.

DRAWINGS SHOW PIPE AND DUCTWORK DIAGRAMMATICALLY.

COORDINATED FIELD DETAILS WITH OTHER TRADES TO AVOID CONSTRUCTION DELAYS AND MAINTAIN REQUIRED CLEARANCES.

VARY RUN AND SHAPE OF DUCTWORK, AND MAKE OFFSETS DURING PROGRESS OF WORK AS REQUIRED TO MEET STRUCTURAL AND OTHER INTERFERENCES AS APPROVED BY ARCHITECT.

PAY ALL COSTS OF DESIGN AND INSTALLATION FOR CHANGES RESULTING FROM SUBSTITUTION OF ALTERNATE PRODUCTS. ACCEPTANCE OF ALTERNATE PRODUCTS BY THE ARCHITECT DOES NOT CHANGE THIS REQUIREMENT.

COORDINATE ALL AIR OUTLETS WITH REFLECTED CEILING PLAN.

COORDINATE ACCESS TO ALL DAMPERS, VALVES, AND EQUIPMENT.

DUCTWORK SHALL BE CONSTRUCTED OF GALVANIZED SHEET METAL UNLESS OTHERWISE SPECIFIED. METAL GAUGES AND CONSTRUCTION: PER SMACNA FAN PRESSURE CLASSIFICATION AND CHAPTER 6 CMC. ALL DUCT SIZES ARE INSIDE CLEAR DIMENSIONS.

FABRICATE DUCTWORK IN A WORKMANLIKE MANNER WITH AIRTIGHT JOINTS. PRESENTING SMOOTH SURFACES ON INSIDE, NEATLY FINISHED ON OUTSIDE; CHANGES IN DIRECTION SHALL BE MADE WITH LONG RADIUS ELBOWS (R=1-1/2 DIA) OR MITERED ELBOWS WITH TURNING VANES. MAKE INTERNAL ENDS OF SLIP JOINTS IN DIRECTION OF AIR FLOW.

CONSTRUCT, BRACE, AND SUPPORT DUCTS AND AIR PLENUMS TO PREVENT SAGGING AND TO MINIMIZE VIBRATION PER SMACNA STANDARDS.

INSTALL EQUIVALENT SIZE RECTANGULAR DUCT WHERE PREFERRED OR WHERE SPACE IS LIMITED AND IN CONCEALED AREAS ONLY.

FLEXIBLE DUCT MAY BE USED AT RUNOUT TO AIR TERMINALS IN CONCEALED AREAS (MAXIMUM 7 FEET LENGTH) AND AS SHOWN ON DRAWINGS. SUPPORT PER SMACNA STANDARDS.

INSTALL MANUAL VOLUME DAMPER AT EACH DIFFUSER BRANCH AND AS INDICATED ON DRAWINGS AND AS FAR FROM THE DIFFUSER AS POSSIBLE. CONSTRUCT DAMPERS OF SAME MATERIAL AS DUCT, ONE GAUGE HEAVIER, REINFORCED TO PREVENT NOISE. INSTALL IN ACCESSIBLE LOCATION WITH LOCKING DEVICE AND INDICATING QUADRANT.

EXCEPT AS OTHERWISE NOTED ON DRAWINGS, ALL CONCEALED SUPPLY AND RETURN DUCTWORK SHALL BE INSULATED WITH 1-1/2" FIBERGLASS BLANKET INSULATION WITH FOIL JACKET. CONDUCTIVITY SHALL BE 0.29 BTU-IN/HR AT 75 DEG. F. FLAME/FUEL/SMOKE MAXIMUM OF 25/50/50. INSTALL PER SMACNA GUIDELINES.

ALL SUPPLY, RETURN, AND EXHAUST TERMINALS SHALL HAVE INTEGRAL VOLUME CONTROL UNLESS OTHERWISE INDICATED.

INSTALL MANUAL VOLUME DAMPER AT EACH DIFFUSER BRANCH AND AS INDICATED ON DRAWINGS AS FAR FROM THE TERMINAL AS POSSIBLE.

ALL LOW VOLTAGE WIRING SHALL BE ENCLOSED IN CONDUIT.

SUBMIT SIX (6) COPIES BOUND SHOP DRAWINGS AND BROCHURES TO ARCHITECT AS FOLLOWS:

- MECHANICAL EQUIPMENT
- DUCTING
- INSULATION

PROVIDE ANY ADDITIONAL DAMPERS REQUIRED FOR CORRECT BALANCE, AT NO ADDITIONAL COST TO THE OWNER.

BALANCE SYSTEM TO WITHIN +/- 5% OF THE AIR QUANTITIES SHOWN. SUBMIT AIR BALANCE REPORT BY NEBB CERTIFIED TECHNICIAN TO ARCHITECT.

VISIBLE INTERIOR PORTIONS OF DUCTWORK AND AIR TERMINALS SHALL BE PAINTED FLAT BLACK.

SEAL DUCTWORK JOINTS WITH AIRTIGHT MASTIC.

MECHANICAL EQUIP SCHEDULE



SPLIT HEAT PUMP UNIT, CARRIER 25H11A436 OUTDOOR CONDENSER WITH CARRIER FV4C002 INDOOR FAN COIL, 33,140 BTUH TOTAL COOLING CAPACITY, 25,030 SENSIBLE COOLING CAPACITY, 32,800 BTUH HEATING CAPACITY AT 47F, 1200 CFM AT 0.6 IWG, 14 SEER, 8.2 HSPF, CONDENSER: 232 LBS, 208/230V-1φ, 19.0 MCA, 30 MOCP, FAN COIL: 150 LBS, 208/230V-1φ, 1/2 HP, 15 MOCP.



SPLIT HEAT PUMP UNIT, CARRIER 25HH4436 OUTDOOR CONDENSER WITH CARRIER FV4C002 INDOOR FAN COIL, 33,140 BTUH TOTAL COOLING CAPACITY, 25,030 SENSIBLE COOLING CAPACITY, 32,800 BTUH HEATING CAPACITY AT 47F, 1200 CFM AT 0.6 IWG, 14 SEER, 8.2 HSPF, CONDENSER: 232 LBS, 208/230V-1φ, 19.0 MCA, 30 MOCP, FAN COIL: 150 LBS, 208/230V-1φ, 1/2 HP, 15 MOCP.



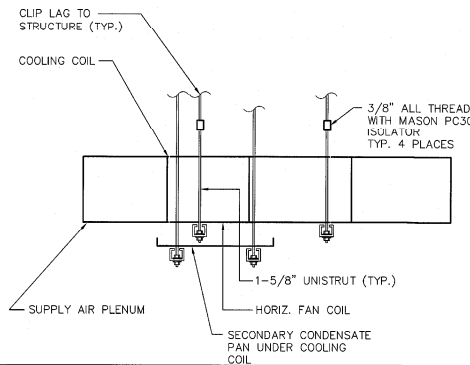
SPLIT HEAT PUMP UNIT, CARRIER 25HH4436 OUTDOOR CONDENSER WITH CARRIER FV4C002 INDOOR FAN COIL, 33,140 BTUH TOTAL COOLING CAPACITY, 25,030 SENSIBLE COOLING CAPACITY, 32,800 BTUH HEATING CAPACITY AT 47F, 1200 CFM AT 0.6 IWG, 14 SEER, 8.2 HSPF, CONDENSER: 232 LBS, 208/230V-1φ, 19.0 MCA, 30 MOCP, FAN COIL: 150 LBS, 208/230V-1φ, 1/2 HP, 15 MOCP.



THERMOSTAT, "VENSTAR" T-2800, ELECTRONIC PROGRAMMABLE THERMOSTAT.

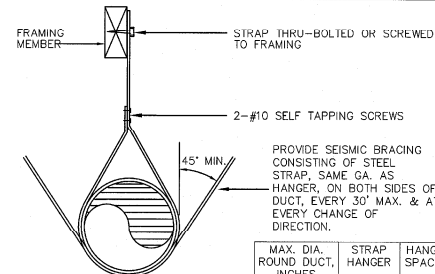


INLINE CABINET EXHAUST FAN, "GREENHECK" MODEL CSP-A710, 400 CFM AT .5"SP, 120 VOLT, 1 PHASE, 60 HZ, 325 WATTS, 2.5 SONES, COMPLETE WITH BACKDRAFT DAMPER AND SPEED CONTROLLER MOUNTED ON FAN, OP. WEIGHT: 36 LBS, INTERLOCK WITH SUPPLY AIR FAN OF FC-3, COORDINATE WITH ELECTRICAL CONTRACTOR.



NTS

2 HORIZONTAL FAN COIL



NOTE: SEISMIC BRACING INDICATED IS FOR ROUND DUCTING LESS THAN 28\"/>

MAX. DIA. ROUND DUCT, INCHES	STRAP HANGER	HANGER SPACING
THRU 14	1"x26 GA	8'
16 THRU 22	1"x24 GA	8'
24 THRU 28	1"x22 GA	8'

NTS

1 ROUND DUCT SUPPORT

LEGEND

SYMBOL	ABREV	DESCRIPTION
	POC	POINT OF CONNECTION
		SUPPLY DUCT SECTION
		RETURN DUCT SECTION
		EXHAUST DUCT SECTION
		SQUARE SUPPLY DIFFUSER
		SQUARE RETURN REGISTER
		SQUARE EXHAUST REGISTER
		FLEXIBLE DUCT
		MANUAL VOLUME DAMPER
		ROOM THERMOSTAT

AIR OUTLET SCHEDULE

UNIT TAG	LOCATION	MANUFACTURER AND MODEL No	GENERAL NOTATION
	24 X 24	PRICE PDN W/OBD	S = SUPPLY R = RETURN (E)S = EXISTING SUPPLY (E)R = EXISTING RETURN ITEM NUMBER AIR QUANTITY (CFM) 12 X 12 = NECK SIZE * EQUAL BY TITUS
	-	PRICE SMDA W/OBD	
	SIDEWALL	PRICE 520 W/OBD	
	24 X 24	PRICE PDR	
	-	PRICE 535	
	24 X 24	PRICE PDR	
	-	PRICE 535	

GENERAL NOTES

- THE CALIFORNIA NONRESIDENTIAL ENERGY STANDARDS HAVE BEEN REVIEWED AND THE DESIGN DRAWINGS COMPLY SUBSTANTIALLY WITH THESE STANDARDS.
- SUPPORT DUCTWORK IN ACCORDANCE WITH CMC, 2019 EDITION.
- PROVIDE CLEAN MINIMUM MERV 8 FILTERS IN FAU AT JOB COMPLETION.
- PROGRAM THERMOSTAT TO OPERATE AC UNIT SUPPLY FANS WHENEVER BUILDING IS OCCUPIED PER CAL GREEN CODE 5.714.7.2.
- DUCT OPENINGS AND OTHER RELATED AIR DISTRIBUTION COMPONENTS OPENINGS SHALL BE COVERED DURING CONSTRUCTION PER CAL GREEN CODE 5.714.4.3.
- PROVIDE MINIMUM R-8 DUCT INSULATION PER SECTION 120.4 OF CEC 2019 STANDARDS.
- PROVIDE AIR BALANCE REPORT PER CAL-GREEN BUILDING CODE.

No.	Description	Date

Project number 130911.44
Date 13 June, 2020
Drawn by JMC
Checked by TRM



ME Job No. 14081-01
130911.44
June 13, 2020
Jorge Escanilla
Mechanical Engineer
(916) 669-6216



STITCH STUDIO

Contact: Jorge Escanilla
4002 Penoma Street
Ventura, California 93003
Direct: 818 629 7251
Email: stitchstudio@gmail.com

FAITH COMMUNITY CHURCH

CLASSROOM BUILDING - CONSTRUCTION DOCUMENT PHASE

355 D Street, Fillmore CA

LEGEND, SCHEDULES, AND NOTES

Scale

M1

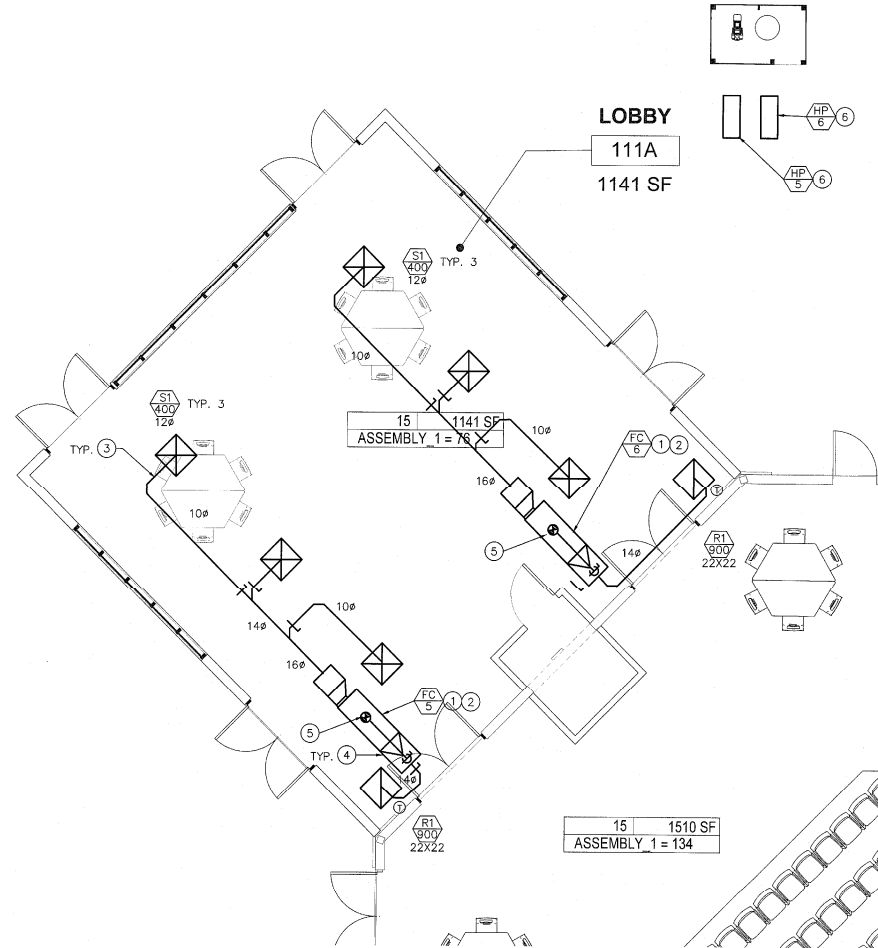
AS SHOWN

GENERAL NOTES

- (A) ENVIRONMENTAL EXHAUST AIR DUCTS SHALL TERMINATE A MINIMUM OF 3'-0" FROM OPENINGS INTO BUILDING.
- (B) OUTSIDE AIR SHALL TERMINATE A MINIMUM OF 10' AWAY FROM ANY PLUMBING VENT, FLUE OR EXHAUST.
- (C) THERMOSTAT SHALL BE LOCATED A MAXIMUM OF 48" ABOVE THE FINISHED FLOOR.

REFERENCE NOTES

- (1) HANG FAN COIL WITH THREADED ROD AND PC-30 SPRING ISOLATOR, CLIP/LAG TO STRUCTURE.
- (2) ROUTE REFRIGERANT PIPING FROM DX COIL TO RESPECTIVE CONDENSING UNIT. INSTALL PER MANUFACTURERS RECOMMENDATIONS.
- (3) ROUTE DUCTWORK IN ATTIC SPACE.
- (4) PROVIDE FILTER MIXING BOX WITH (2) 20" X 20" X 2" THICK MERV 8 FILTERS.
- (5) 10"Ø OUTSIDE AIR DUCT TERMINATE AT ROOF DORMER. SET MINIMUM OUTSIDE AIR TO 300 CFM.
- (6) ANCHOR CONDENSING UNIT TO MINIMUM 4" THICK CONCRETE PAD. INSTALL A PROTECTIVE FENCE AROUND UNITS WITH MINIMUM 4" CLEARANCE AROUND ALL SIDES. ROUTE REFRIGERATION PIPING BELOW GRADE INSIDE A SEALED PVC SLEEVE FROM THE CONDENSING UNIT TO THE BUILDING.



LOBBY ADDITION FLOOR PLAN

SCALE: 1/4" = 1'-0"

No.	Description	Date

Project number 130911.44
 Date 13 June, 2020
 Drawn by JMC
 Checked by TRM



1800 Z. Kelly, St. Suite #
 Ventura, California 93003
 (805) 657-0215



STITCH STUDIO

Contact: Jorge Escamilla
 4020 Pomona Street
 Ventura, California 93003
 Direct: 818.833.7261
 Email: stitchstudio@gmail.com

FAITH COMMUNITY CHURCH

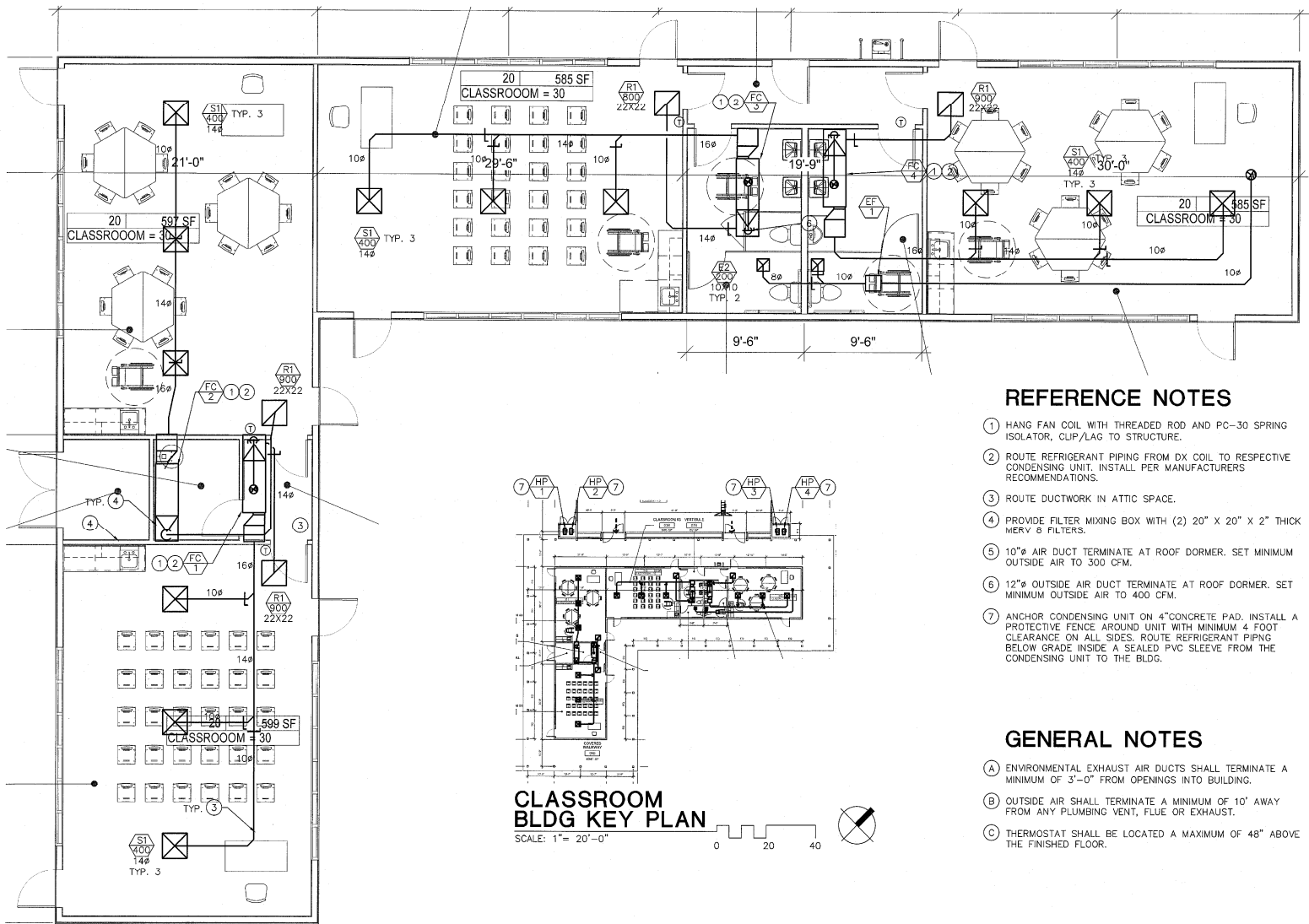
CLASSROOM BUILDING - CONSTRUCTION DOCUMENT PHASE

355 D Street, Fillmore CA

LOBBY ADDITION FLOOR AND ROOF PLANS

M2

Scale AS SHOWN



CLASSROOM BLDG FLOOR PLAN
SCALE: 1/4" = 1'-0"

REFERENCE NOTES

- ① HANG FAN COIL WITH THREADED ROD AND PC-30 SPRING ISOLATOR, CLIP/LAG TO STRUCTURE.
- ② ROUTE REFRIGERANT PIPING FROM DX COIL TO RESPECTIVE CONDENSING UNIT, INSTALL PER MANUFACTURERS RECOMMENDATIONS.
- ③ ROUTE DUCTWORK IN ATTIC SPACE.
- ④ PROVIDE FILTER MIXING BOX WITH (2) 20" X 20" X 2" THICK MERV 6 FILTERS.
- ⑤ 10"ø AIR DUCT TERMINATE AT ROOF DORMER. SET MINIMUM OUTSIDE AIR TO 300 CFM.
- ⑥ 12"ø OUTSIDE AIR DUCT TERMINATE AT ROOF DORMER. SET MINIMUM OUTSIDE AIR TO 400 CFM.
- ⑦ ANCHOR CONDENSING UNIT ON 4" CONCRETE PAD. INSTALL A PROTECTIVE FENCE AROUND UNIT WITH MINIMUM 4 FOOT CLEARANCE ON ALL SIDES. ROUTE REFRIGERANT PIPING BELOW GRADE INSIDE A SEALED PVC SLEEVE FROM THE CONDENSING UNIT TO THE BLDG.

GENERAL NOTES

- A ENVIRONMENTAL EXHAUST AIR DUCTS SHALL TERMINATE A MINIMUM OF 3'-0" FROM OPENINGS INTO BUILDING.
- B OUTSIDE AIR SHALL TERMINATE A MINIMUM OF 10' AWAY FROM ANY PLUMBING VENT, FLUE OR EXHAUST.
- C THERMOSTAT SHALL BE LOCATED A MAXIMUM OF 48" ABOVE THE FINISHED FLOOR.

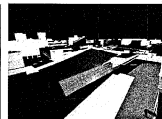
CLASSROOM BLDG KEY PLAN
SCALE: 1" = 20'-0"

No.	Description	Date

Project number 130911.44
Date 13 June, 2020
Drawn by JMC
Checked by TRM



1447 E. Main St., Suite 300
Ventura, California 93007
(805) 669-8876



STITCH STUDIO

Contact: Jorge Escamilla
4662 Pomona Street
Ventura, California 93003
Direct: 818 523 7261
Email: stitchstudio3@gmail.com

FAITH COMMUNITY CHURCH

CLASSROOM BUILDING - CONSTRUCTION DOCUMENT PHASE

355 D Street, Fillmore CA

CLASSROOM BLDG FLOOR PLAN

M3

Scale AS SHOWN

PLUMBING SPECIFICATION

1. OBTAIN AND PAY FOR ALL PERMITS, FEES, CONNECTION CHARGES, AND TEMPORARY SERVICE CHARGES REQUIRED FOR EXECUTION OF WORK.
2. MATERIALS AND INSTALLATION SHALL COMPLY WITH APPLICABLE LOCAL, STATE, AND NATIONAL CODES AND ORDINANCES.
3. COORDINATE FIELD DETAILS WITH OTHER TRADES TO AVOID CONSTRUCTION DELAYS AND MAINTAIN REQUIRED CLEARANCES.
4. PAY COST OF DESIGN AND INSTALLATION FOR CHANGES RESULTING FROM SUBSTITUTION OF ALTERNATE PRODUCTS. ACCEPTANCE OF ALTERNATE PRODUCTS BY THE ARCHITECT DOES NOT CHANGE THIS REQUIREMENT. NO PRODUCT WILL BE ACCEPTED ON JOB SITE WITHOUT PRIOR APPROVAL.
5. DRAWINGS SHOW PIPE DIAGRAMMATICALLY.
6. ADHERE TO DRAWINGS AS CLOSELY AS POSSIBLE IN LAYING OUT WORK.
7. VARY RUN OF PIPING, AND MAKE OFFSETS DURING PROGRESS OF WORK AS REQUIRED TO MEET STRUCTURAL AND OTHER INTERFERENCES AS APPROVED BY ARCHITECT.
8. EXACT LOCATION OF PLUMBING FIXTURES SHALL BE DETERMINED FROM ARCHITECTURAL DRAWINGS.
9. VERIFY AND COORDINATE LOCATION OF ALL PLUMBING LINES WITH DUCTWORK AND ELECTRICAL SERVICES.
10. ALL VENTS THROUGH ROOF SHALL BE 10'-0" REMOVED FROM ALL AIR INTAKES, WINDOWS, AND OPENINGS INTO THE BUILDING. TIE VENTS TOGETHER SO THAT A MINIMUM NUMBER TERMINATE THROUGH THE ROOF.
11. INSTALL ALL HOT WATER PIPING WITH 1 INCH THICK FIBERGLASS INSULATION WITH THERMAL CONDUCTIVITY >0.22 AND FACTORY JACKET AND "ZESTON" FITTINGS.
12. ROUGH-IN ALL WASTES AND SUPPLIES TO SPECIAL EQUIPMENT ACCORDING TO MANUFACTURER'S SHOP DRAWINGS AND MAKE FINAL CONNECTIONS. ALL SUPPLIES SHALL BE VALVED.
13. INSTALL DIELECTRIC UNIONS AT CONNECTIONS OF DISSIMILAR METALS.
14. PIPING SHALL NOT PASS THROUGH FOOTINGS. ALL PIPES SHALL BE RUN ABOVE FOOTING, UNLESS OTHERWISE SHOWN ON PLANS. SEE STRUCTURAL DRAWINGS FOR REQUIREMENTS.
15. ALL WATER PIPING BELOW GRADE THAT IS UNDER PRESSURE SHALL HAVE A MINIMUM COVER OF 30".
16. EXTEND ALL CONDENSATE AND INDIRECT DRAIN LINES FROM EQUIPMENT TO FLOOR SINKS OR OTHER APPROVED FIXTURES.
17. TERMINATE ALL WATER AND GAS ROUGH-INS WITH SHUT-OFF VALVES BEFORE CONNECTING TO EQUIPMENT AND FIXTURES.
18. CUTTING, WHEN REQUIRED, SHALL BE SUBJECT TO APPROVAL BY ARCHITECT.
19. BIND SUBMITTAL IN BOOKLET FORM. SUBMIT SHOP DRAWINGS, BROCHURES AS FOLLOWS:
 - A. PIPE FITTINGS AND INSULATION.
 - B. FIXTURES AND EQUIPMENT.
 - C. VALVES.
20. SEAL PIPES PASSING THROUGH FIRE RATED WALLS WITH APPROVED FIRE STOP MATERIAL.
21. PIPE AND FITTINGS SHALL BE AS FOLLOWS:

SERVICE	SIZE	SPECIFICATIONS
GAS	ALL	SCHEDULE 40 BLACK SEAMLESS STEEL, ASTM A106 OR A53, GRADE A OR B. FITTINGS: 150 LB. BLACK MALLEABLE IRON, SCREWED, ASTM A338.
VENT	ALL	SCHEDULE 40 GALVANIZED BUTT WELD STEEL, ASTM A120. FITTINGS: 150 LB. GALVANIZED SCREWED.
CW, HW	ALL	COPPER TUBING TYPE L ASTM B88. FITTINGS: CAST BRONZE OR WROUGHT COPPER SOLDER.
WASTE, RWL	ALL	HUBLESS CAST IRON SERVICE WEIGHT PIPE AND FITTINGS WITH NEOPRENE COUPLINGS AND CORRUGATED STAINLESS STEEL BANDS. FOR CORROSIVE APPLICATIONS: SCH 40 PVC DWV WITH SOLVENT WELDED PVC DWV FITTINGS.
RWL	ALL	SCH. 40 PVC DWV OR ABS PIPING AND FITTINGS WITH SOLVENT WELDED JOINTS.

22. HANGERS AND SUPPORTS SHALL BE DESIGNED TO SUPPORT WEIGHT OF PIPE, WEIGHT OF FLUID, AND WEIGHT OF PIPE INSULATION.
23. PROVIDE EACH HANGER OR CLAMP WITH AN ISOLATION MATERIAL, HAVING A METAL BACKING, TO ISOLATE SOUND VIBRATION AND ELECTROLYSIS. ISOLATOR NOT REQUIRED FOR SOIL, WASTE, VENT OR FUEL GAS PIPING.
24. INSULATED PIPING SHALL HAVE A SADDLE INSTALLED AT EACH HANGER OR SUPPORT. SIZE SADDLES FOR PIPE DIAMETER AND FOR INSULATION THICKNESS.
25. BURIED CAST IRON PIPE SHALL BE COATED WITH ASPHALTUM VARNISH OR SIMILAR COATING STANDARD OF PIPE MANUFACTURER.
26. BURIED BLACK STEEL PIPE SHALL BE FACTORY WRAPPED WITH PROTECTIVE CHLORIDE OR POLYETHYLENE TAPE, SIMILAR TO "SCOTCHWRAP NO. 51".
27. FURNISH ALL MATERIALS AND COORDINATE INSTALLATION OF FLASHING AND COUNTERFLASHING FOR ALL ROOF PENETRATIONS FOR VENTS, PIPES, AND FLUES.
28. PURGE ALL WATER AND GAS LINES BEFORE FINAL INSPECTION.
29. TEST ALL WATER SYSTEMS AT HYDROSTATIC PRESSURE OF NOT LESS THAN 150 PSIG, WITH 5 PSIG PERMISSIBLE DROP AT END OF FOUR HOURS.
30. FILL ENTIRE WASTE AND VENT SYSTEM WITH WATER TO LEVEL OF HIGHEST VENT STACK. SYSTEM SHALL HOLD WATER FOR TWO HOURS.
31. TEST RAINWATER SYSTEMS IN SAME MANNER AS WASTE AND VENT SYSTEM. TEST FUEL GAS PIPING WITH AIR AT A PRESSURE OF NOT LESS THAN 10 PSIG FOR A MINIMUM OF 15 MINUTES WITH NO PERCEPTIBLE DROP IN PRESSURE.
32. UPON COMPLETION OF WORK, ALL CHANGES SHALL BE NOTED ON A NEW SET OF PRINTS AND DELIVERED TO THE ARCHITECT.
33. TESTS MUST BE PERFORMED AND SYSTEMS APPROVED PRIOR TO PAINTING, COVERING, INSULATING, FURRING, OR CONCEALING PIPING.

LEGEND

SYMBOL	ABREY	DESCRIPTION
	CD	CONDENSATE DRAIN PIPE
	FS	FIRE SPRINKLER PIPE
	G	GAS PIPE
	CW	COLD WATER PIPE
	HW	HOT WATER PIPE
	W	SANITARY SOIL OR WASTE PIPE
	V	VENT PIPE
	FCO	FLOOR CLEAN OUT
	GCO	GRADE CLEAN OUT
	CO	DRAIN CLEAN OUT
	WCO	WALL CLEAN OUT
		POINT OF CONNECTION
	SOV	SHUT OFF VALVE

PLUMBING EQUIPMENT SCHEDULE

- TANKLESS WATER HEATER, "TAKAGI" MODEL T-H3M-IN, 4.5 GPM AT 50°F TEMP RISE, 120 MBH NATURAL GAS INPUT, 3" PVC COMBUSTION AIR INTAKE AND FLUE VENT INSTALLED WITH WATER SUPPLY FILTER AND HW DISCHARGE T&P RELIEF VALVE.
- LITTLE GIANT CONDENSATE PUMP, MODEL VOL-14, 1/50 HP, 120 VOLT, 1 PHASE, 1.0 AMPS, 78 WATTS, 6 FOOT, POWER CORD, 25 GPM AT 13 FT HEAD.
- TRAP PRIMER, "PPP INC." MODEL PR-500 WITH DISTRIBUTION UNIT AS REQUIRED FOR QUANTITY OF TRAPS SERVED. LOCATE BEHIND ACCESS DOOR IN WALL ADJACENT TO FLOOR DRAIN.
- WATER HAMMER ARRESTOR, "PPP INC." SC SERIES, LOCATE AT END OF MAIN LINE SERVING TOILET ROOMS, FULL SIZE OF LINE SERVING TOILET ROOMS.

PLUMBING FIXTURE SCHEDULE

- WATER CLOSET (ADA COMPLIANT/T24ACC), "KOHLER" MODEL K-4405, VITREOUS CHINA, FLOOR MOUNT, 1.28 GALLON FLUSH, ELONGATED BOWL, 17" RIM HEIGHT, "ZURN" MODEL ZER600PL-HET-CPM, 1.28 GALLON BATTERY POWERED SENSOR FLUSH VALVE, OPEN FRONT SEAT (WHITE).
- WATER CLOSET, "KOHLER" MODEL K-4405, VITREOUS CHINA, FLOOR MOUNT, 1.28 GALLON FLUSH, ELONGATED BOWL, 15" RIM HEIGHT, "ZURN" MODEL ZER600PL-HET-CPM, 1.28 GALLON BATTERY POWERED SENSOR FLUSH VALVE, OPEN FRONT SEAT (WHITE).
- URINAL (ADA COMPLIANT/T24ACC), "KOHLER" MODEL K-4960, VITREOUS CHINA, WALL MOUNTED WITH "JR SMITH" WALL CARRIER, 17" RIM HEIGHT, "ZURN" MODEL ZER6003AV-JLF-CPM, 0.125 GALLON BATTERY POWERED SENSOR FLUSH VALVE.
- LAVATORY (ADA COMPLIANT/T24ACC), "KOHLER" MODEL K-2861, VITREOUS CHINA, COUNTER MOUNT, "SLOAN" MODEL #EAF-275-ISM, ELECTRONIC SOLAR POWERED BARRIER-FREE FAUCET WITH THERMOSTATIC MIXING VALVE, 0.5 GPM FLOW RATE, SUPPLY WITH CHROME PLATED GRID DRAIN, CHROME PLATED P-TRAP, BRASS SUPPLY STOPS, AND "BROCAR PRODUCTS, INC." TRAP WRAP KIT C500R.
- SINK (ADA COMPLIANT/T24ACC), "ELKAY" MODEL ADAR-2521 SINGLE BOWL, STAINLESS STEEL, SELF RIM, COUNTER MOUNT, "ELKAY" MODEL LK-4100, SINGLE LEVER HANDLE FAUCET, 8" CENTERS, 1.5 GPM FLOW RATE, SUPPLY WITH CHROME PLATED GRID DRAIN, CHROME PLATE P-TRAP, AND BRASS SUPPLY STOPS.
- DRINK DISPENSER, "ELKAY" EZH2O MODEL LZWSSM, SURFACE MOUNTED WALL HUNG BOTTLE FILL STATION, WITH FILTER AND P-TRAP.
- FLOOR DRAIN, "JR SMITH" MODEL 2005, ROUND TOP, SIZE 2", WITH P-TRAP AND TRAP PRIMER FITTING.

INSTALL POINT OF USE THERMOSTATIC MIXING VALVE AT EACH LAV AND SINK HOT WATER SUPPLY, SET AT 110 DEG. F "LEONARD" MODEL 270-LF OR "BRADLEY" S59-4000A.

MINIMUM CONNECTION SIZES

FIXTURE	S/W	VENT	DRAIN	COLD WATER	HOT WATER
WATER CLOSET (FLUSH VALVE)	4"	2"	-	1-1/2"	-
URINAL	2"	1-1/2"	-	1-1/4"	-
LAV/SINK	2"	1-1/2"	-	1/2"	1/2"
SINK	2"	1-1/2"	-	1/2"	1/2"

GENERAL NOTES

1. COORDINATE ARRANGEMENTS FOR THE UTILITIES REQUIRED. PAY ALL COSTS INVOLVED IN OBTAINING THE SERVICES.
2. DISINFECT POTABLE WATER PIPING IN ACCORDANCE WITH SECTION 609.9 OF CPC, 2019 EDITION.
3. FIELD VERIFY EXISTING PIPING SYSTEMS FOR SIZE, LOCATION, AND ELEVATION.

No.	Description	Date

Project number 130911.44
 Date 13 June, 2020
 Drawn by JMC
 Checked by TRM



STITCH STUDIO
 Contact: Jorge Escamilla
 4012 Pomona Street
 Ventura, California 93003
 Direct: 818 828 7201
 Email: stitchstudio3@gmail.com

FAITH COMMUNITY CHURCH

CLASSROOM BUILDING - CONSTRUCTION DOCUMENT PHASE

355 D Street, Fillmore CA

LEGEND, SCHEDULES, AND NOTES

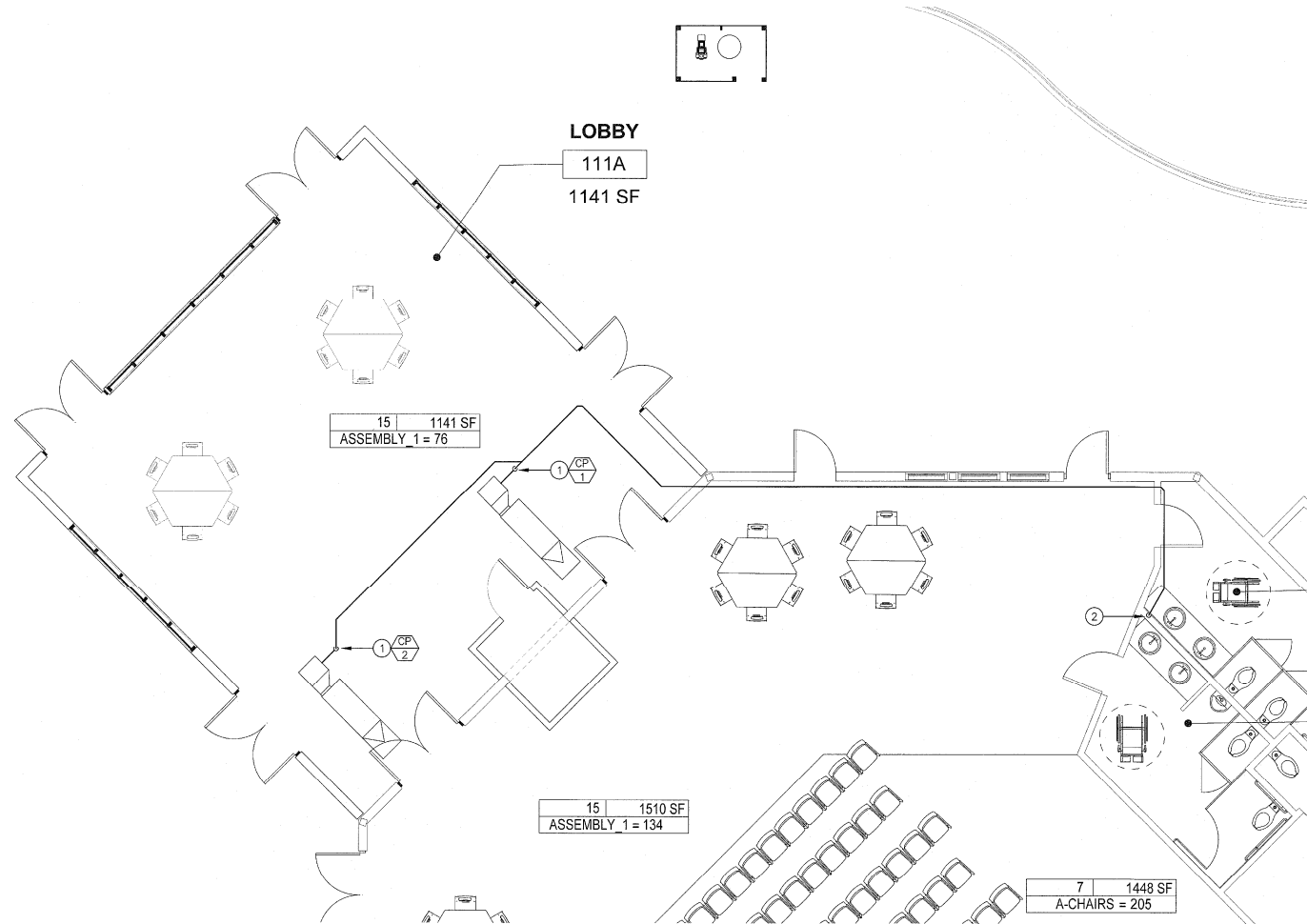
P1

GENERAL NOTES

(A) SLOPE ALL WASTE AND CONDENSATE DRAINAGE PIPING AT A MINIMUM OF 1/8" PER FOOT.

REFERENCE NOTES

- (1) INSTALL CONDENSATE LIFT PUMP ON FAN COIL PRIMARY CONDENSATE DRAIN. ROUTE AS HIGH AS POSSIBLE TO GRAVITY DRAIN TO (E) TOILET RM LAV TAILPIECE. ROUTE 3/4" COPPER SECONDARY CONDENSATE DRAIN TO AN OBSERVABLE LOCATION.
- (2) ROUTE 3/4" COPPER COMBINED CONDENSATE DRAIN DOWN IN WALL TO (E) LAV TAILPIECE.



LOBBY ADDITION FLOOR PLAN

SCALE: 1/4" = 1'-0"

No.	Description	Date

Project number
Date
Drawn by
Checked by

130911.44
13 June, 2020
JMK
TRM



ME. Job No. 14081-01
MOON ENGINEERING, INC.
1000 S. G Street
Pleasanton, California 94566
(925) 657-5215



STITCH
STUDIO

Contact: Jorge Escamilla
4022 Penoma Street
Ventura, California 93003
Direct: 818 623 7201
Email: stitchstudio@gmail.com

FAITH COMMUNITY CHURCH

CLASSROOM BUILDING CONSTRUCTION DOCUMENT PHASE

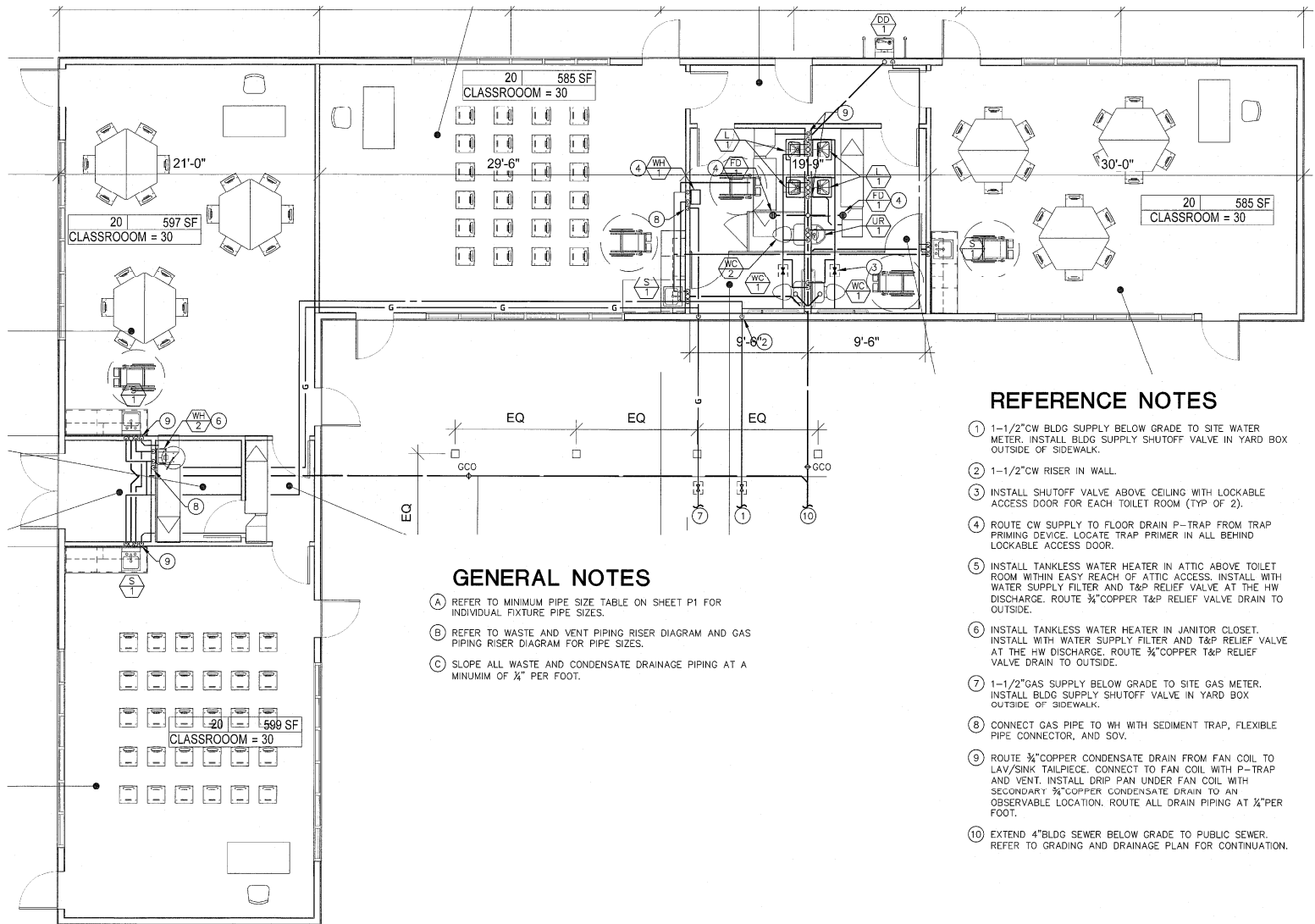
355 D Street, Fillmore CA

LOBBY ADDITION FLOOR AND ROOF PLANS

P2

Scale

AS SHOWN



REFERENCE NOTES

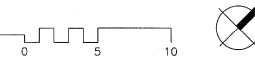
- ① 1-1/2" CW BLDG SUPPLY BELOW GRADE TO SITE WATER METER. INSTALL BLDG SUPPLY SHUTOFF VALVE IN YARD BOX OUTSIDE OF SIDEWALK.
- ② 1-1/2" CW RISER IN WALL.
- ③ INSTALL SHUTOFF VALVE ABOVE CEILING WITH LOCKABLE ACCESS DOOR FOR EACH TOILET ROOM (TYP OF 2).
- ④ ROUTE CW SUPPLY TO FLOOR DRAIN P-TRAP FROM TRAP PRIMING DEVICE. LOCATE TRAP PRIMER IN ALL BEHIND LOCKABLE ACCESS DOOR.
- ⑤ INSTALL TANKLESS WATER HEATER IN ATTIC ABOVE TOILET ROOM WITHIN EASY REACH OF ATTIC ACCESS. INSTALL WITH WATER SUPPLY FILTER AND T&P RELIEF VALVE AT THE HW DISCHARGE. ROUTE 3/4" COPPER T&P RELIEF VALVE DRAIN TO OUTSIDE.
- ⑥ INSTALL TANKLESS WATER HEATER IN JANITOR CLOSET. INSTALL WITH WATER SUPPLY FILTER AND T&P RELIEF VALVE AT THE HW DISCHARGE. ROUTE 3/4" COPPER T&P RELIEF VALVE DRAIN TO OUTSIDE.
- ⑦ 1-1/2" GAS SUPPLY BELOW GRADE TO SITE GAS METER. INSTALL BLDG SUPPLY SHUTOFF VALVE IN YARD BOX OUTSIDE OF SIDEWALK.
- ⑧ CONNECT GAS PIPE TO WH WITH SEDIMENT TRAP, FLEXIBLE PIPE CONNECTOR, AND SOV.
- ⑨ ROUTE 3/4" COPPER CONDENSATE DRAIN FROM FAN COIL TO LAV/SINK TAILPIECE. CONNECT TO FAN COIL WITH P-TRAP AND VENT. INSTALL DRIP PAN UNDER FAN COIL WITH SECONDARY 3/4" COPPER CONDENSATE DRAIN TO AN OBSERVABLE LOCATION. ROUTE ALL DRAIN PIPING AT 1/4" PER FOOT.
- ⑩ EXTEND 4" BLDG SEWER BELOW GRADE TO PUBLIC SEWER. REFER TO GRADING AND DRAINAGE PLAN FOR CONTINUATION.

GENERAL NOTES

- (A) REFER TO MINIMUM PIPE SIZE TABLE ON SHEET P1 FOR INDIVIDUAL FIXTURE PIPE SIZES.
- (B) REFER TO WASTE AND VENT PIPING DIAGRAM AND GAS PIPING RISER DIAGRAM FOR PIPE SIZES.
- (C) SLOPE ALL WASTE AND CONDENSATE DRAINAGE PIPING AT A MINIMUM OF 1/4" PER FOOT.

CLASSROOM BLDG FLOOR PLAN

SCALE: 1/4" = 1'-0"



No.	Description	Date

Project number 130911.44
 Date 13 June, 2020
 Drawn by JMC
 Checked by TRM



STITCH STUDIO
 Contact: Jorge Escamilla
 4802 Pomona Street
 Ventura, California 91303
 Direct: 618 523 7261
 Email: stitchstudio2014@gmail.com

FAITH COMMUNITY CHURCH
 CLASSROOM BUILDING - CONSTRUCTION DOCUMENT PHASE

355 D Street, Fillmore CA

CLASSROOM BLDG FLOOR PLAN

Scale AS SHOWN

P3

UTILITY LOADS

WATER:

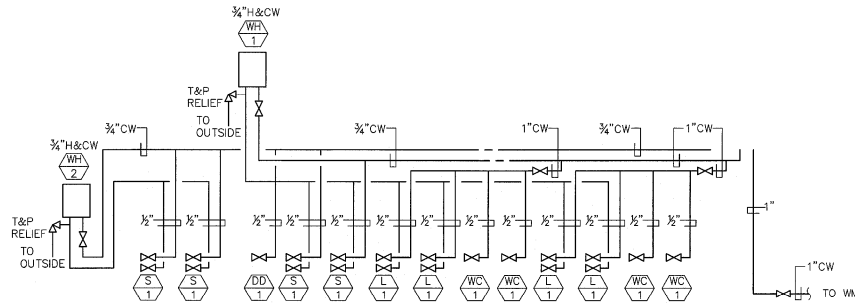
TI	QUANTITY	FIXTURE	FIXTURE UNITS	TOTAL UNITS
			CW	CW
	3	WC	2.5	= 7.5
	4	LAV	1	= 4
	4	SINK	2	= 8
	1	URINAL	3	= 3
	1	DRINK DISP	1	= 1
		TOTAL		= 24

PLBG FIXTURES = 24 FU = 16 GPM
 CALC BASED ON (E)1" METER; (E)1-1/2" MAIN:

PRESSURE AT BLDG = 80 PSI
 LOSS THRU METER = 3 PSI
 LOSS THRU BACKFLOW DEVICE = 12 PSI
 LOSS THRU PRV = 6 PSI
 ELEVATION LOSS = 7 FT X 0.43 = 3 PSI
 RESIDUAL PRESSURE (FLUSH TANK) = 10 PSI
 PRESSURE AVAILABLE FOR LOSS = 43 PSI

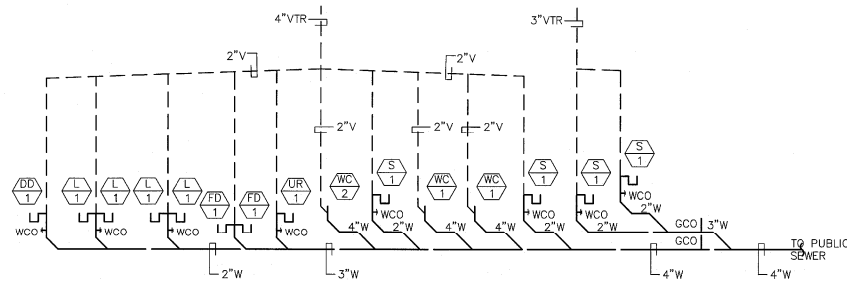
FRICITION LOSS/100 FT = 43 PSI/100 FT
 FRICTION LOSS = 43 PSI/100 FT X 200 FT = 21.5 PSI
 (E) WATER METER SIZE = 1"
 (E) WATER SUPPLY SIZE = 1-1/2"
 (E) SEWER SIZE = 4"

PIPE SCHEDULE (FU)		COLD WATER		
SIZE	F.T.	F.V.	HW	FPS
1/2"	6	-	3	5
3/4"	16	-	9	12
1"	31	-	17	20
1-1/4"	56	-	29	31
1-1/2"	104	-	48	44



WATER PIPING RISER DIAGRAM

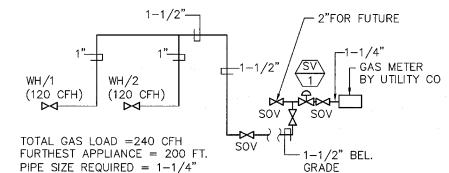
NO SCALE



NOTE: SLOPE ALL DRAIN PIPING AT MINIMUM 1/4" PER FOOT

WASTE AND VENT PIPING RISER DIAGRAM

NO SCALE



TOTAL GAS LOAD = 240 CFH
 FURTHEST APPLIANCE = 200 FT.
 PIPE SIZE REQUIRED = 1-1/4"

GAS PIPING RISER DIAGRAM

NO SCALE

No.	Description	Date

Project number 130911.44
 Date 13 June, 2020
 Drawn by JMLC
 Checked by TRM



STITCH STUDIO
 Contact: Jorge Escamilla
 4602 Penoma Street
 Ventura, California 93003
 Direct: 818 823 7201
 Email: stitchstudio@gmail.com

FAITH COMMUNITY CHURCH
 CLASSROOM BUILDING - CONSTRUCTION DOCUMENT PHASE

355 D Street, Fillmore CA

PIPING DIAGRAMS

P4

Scale AS SHOWN

SHEET NOTES

- CONTRACTOR SHALL CALL UNDERGROUND SERVICE ALERT AT 811 TO LOCATE UNDERGROUND UTILITIES AT LEAST 2 WORKING DAYS PRIOR TO COMMENCEMENT OF EXISTING IMPROVEMENTS PRIOR TO START OF CONSTRUCTION.
- VERIFY LOCATION OF ALL BUILDINGS AND APPURTENANCES ON ARCHITECTURAL AND CIVIL PLANS.
- FIELD VERIFY LOCATION ON ALL UNDERGROUND UTILITIES PER THE FINISHING SCHEDULE AND COORDINATE. ALL SITE WORK WITH OWNER PRIOR TO ANY TRENCHING.
- CONTRACTOR SHALL VERIFY LOCATION & REQUIREMENTS OF ALL DEVICES/EQUIPMENT REQUIRING ELECTRICAL CONNECTION PRIOR TO BID PROPOSAL, RUSH-IN, AND FINISH.
- CONTRACTOR SHALL, IN ROUTING ALL CIRCUITS, INCREASE CONDUCTOR & CONDUIT SIZE TO ALLOW FOR VOLTAGE DROP SHALL BE NOTIFIED PRIOR TO EXCEED ROUTING INDICATED ON DRAWINGS. ENGINEER OF RECORD MUST BE NOTIFIED PRIOR TO ANY DIVERTING FROM APPROVED PLAN CHECK (PERMIT SET) DRAWINGS.
- CONTRACTOR SHALL COORDINATE AND PROVIDE ALL SITE ELECTRICAL SERVICE REQUIREMENTS WITH SERVING UTILITY.
- ALL 80 DEGREE CONDUIT BENDS AND REDUCERS SHALL BE PVC COATED ROSS STEEL.
- ALL SERVICE ENTRANCE EQUIPMENT SHALL BE APPROVED BY THE LOCAL UTILITY COMPANY FOR APPROVAL WITH WRITTEN APPROVAL. ALL SERVICE ENTRIES TO BUILDING TO BE APPROVED BY SUBMITTER TO ELECTRICAL ENGINEER FOR APPROVAL.
- VERIFY LOCATION OF ALL EQUIPMENT ON ARCHITECTURAL AND CIVIL PLANS.
- MINIMUM CONDUIT BURIAL DEPTH IS 24" 20" MINIMUM BURIAL DEPTH AND MINIMUM COVER FOR 0-800 VOLT SYSTEMS.
- PROVIDE COOL SIZED EQUIPMENT ENCLOSURES IN ALL OCCUPIED CONDUITS.
- 1" CONDUIT MINIMUM UNDERGROUND.
- COORDINATE WORK WITH OTHER TRADES OBTAIN ALL PERMITS THAT WILL REQUIRE COORDINATION AND PROVIDE ALL ELECTRICAL CONNECTIONS, SERVICE AND WIRING INCLUDING ALL WORK SHOWN ON ELECTRICAL MANUFACTURER'S DRAWINGS.
- CONTRACTOR SHALL FURNISH AND INSTALL BULK HEADS AS REQUIRED TO INSTALL CONDUCTORS PER CONDUIT MANUFACTURER'S RECOMMENDATIONS, PER THE NATIONAL ELECTRICAL CODE, AND PER LOCAL PROVIDER DRAWING SUBMISSION.
- FIELD CONDITIONS GOVERN DEMOLITION AND NEW CONSTRUCTION. CONTRACTOR SHALL VERIFY ACTUAL CONDITIONS PRIOR TO START OF WORK. THE ARCHITECT/ENGINEER SHALL BE NOTIFIED OF POSSIBLE FIELD PROBLEMS PRIOR TO DEMOLITION. CONTRACTOR SHALL NOTIFY OWNER IMMEDIATELY OF ANY FIELD CONDITIONS. DEMOLITION SHALL BE PERFORMED CONSEQUENTLY WITH THE FIELD CONDITIONS.
- ALL EMPTY CONDUITS SHALL BE PROVIDED WITH DIMENSIONED IN-LINE PULL STRIPS.
- CONTRACTOR SHALL FIELD VERIFY LOCATION OF ALL UNDERGROUND UTILITIES PRIOR TO ANY WORK. ALL EXISTING/REMOVED UTILITIES IN PLACE SHALL BE REPAIRED PRIOR TO SUBMISSION TO LOCAL UTILITY COMPANY FOR APPROVAL. CONTRACTOR SHALL REPAIR ANY UTILITY SYSTEMS DAMAGED DURING CONSTRUCTION.

KEY NOTES

(NOTE: THESE NOTES MAY NOT APPEAR ON ALL SHEETS)

- 1 PROVIDE 1" C. #10 & 1#10 GND.
- 2 PROVIDE 1" C. #10 & 1#10 GND.
- 3 PROVIDE POLARS IF SERIES CONNECTORS FROM PARALLEL SET OF CONDUCTORS TO SINGLE SET CONDUCTORS. REFER TO CONSTRUCTION.
- 4 PROVIDE 17" X 30" TRAFFIC RATED FULLOX WITH STEEL CHECKER PLATE COVER ENCLOSED WITH "COMMUNICATIONS" DIVISION WITH #1130-S141 COVER, BY CURBSIDE CONCRETE.
- 5 PROVIDE 17" X 30" TRAFFIC RATED FULLOX WITH STEEL CHECKER PLATE COVER ENCLOSED WITH "COMMUNICATIONS" DIVISION WITH #1130-S141 COVER, BY CURBSIDE CONCRETE.
- 6 LIGHT FIXTURE SHALL PROVIDE EXTERIOR EMERGENCY ILLUMINATION TO PUBLIC WAY IN THE EVENT OF A POWER LOSS.

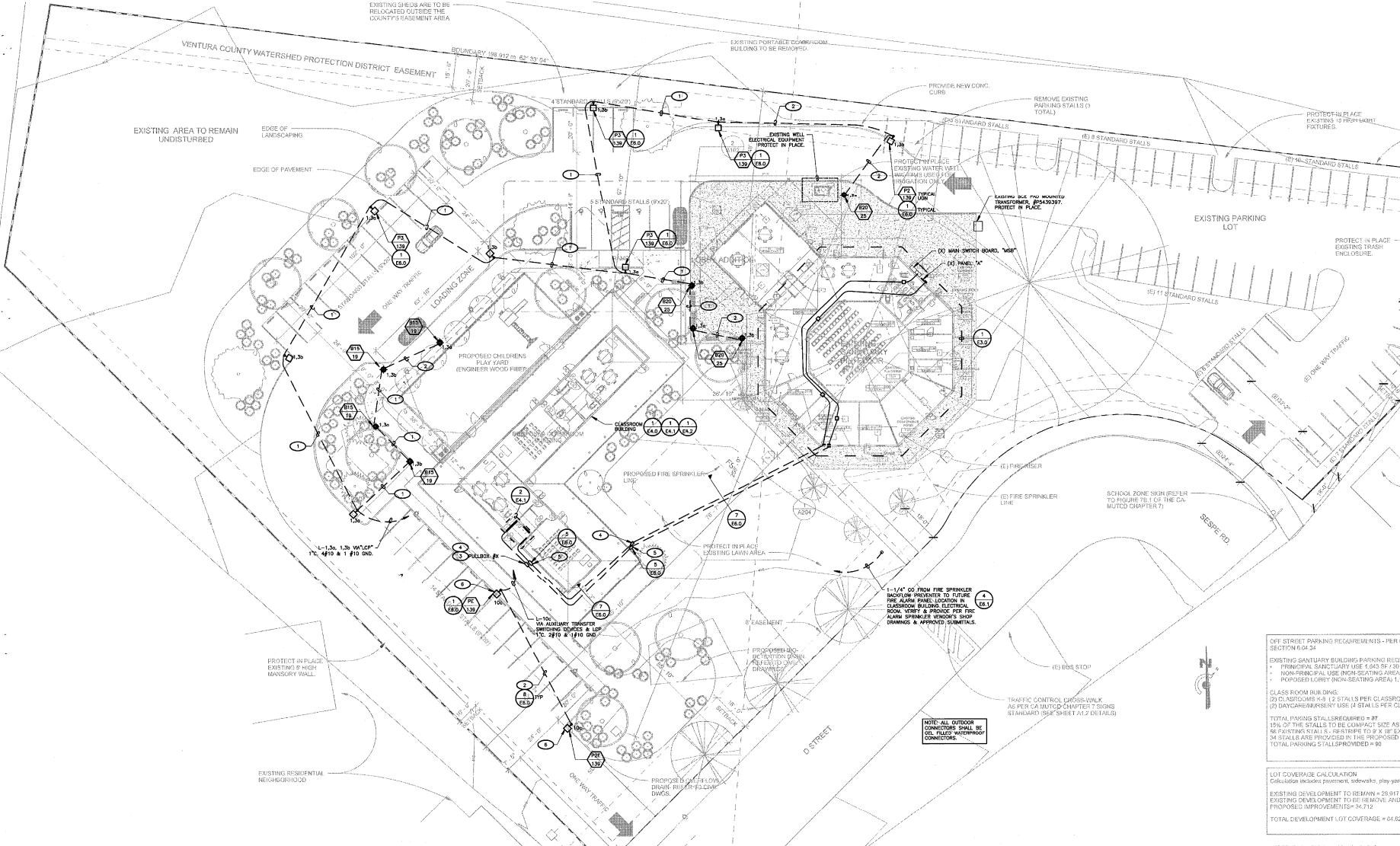
OFF STREET PARKING REQUIREMENTS - PER CITY SECTION 8.0.24
 EXISTING SANITARY BUILDING PARKING REQUIREMENTS
 • PRINCIPAL SANITARY USE 1,543 SF / 35 PARK
 • NON-PRINCIPAL USE (NON-SEATING AREA) 1,141 / 2
 PROPOSED LOBBY (NON-SEATING AREA) 1,141 / 2
 CLASS ROOM BUILDING:
 (2) CLASSROOMS 448 / 2 STALLS PER CLASSROOMS
 (2) DAYCARE/ANSERARY USE: (4) STALLS PER CLASS
 TOTAL PARKING STALLS REQUIRED = 87
 10% OF THE STALLS TO BE COMPACT SIZE AS PER (4) 86 SYSTEMS STALLS. RESTRICTION TO 9' X 18' EXCL. 34 STALLS ARE PROVIDED IN THE PROPOSED NEW. TOTAL PARKING STALLS PROVIDED = 80

LOT COVERAGE CALCULATION
 Calculation includes driveway, sidewalk, play yard area
 EXISTING DEVELOPMENT TO REMAIN = 29,917 SF
 EXISTING DEVELOPMENT TO BE REMOVED AND DISC. PROPOSED IMPROVEMENTS = 34,112
 TOTAL DEVELOPMENT LOT COVERAGE = 64,029 SF

NOTE: Table 1010.1 provides the limitations on travel at the installation of a splitter system. For travel involving this system is 200 feet. With a splitter system installed 200 feet, but for 100 feet, if necessary to 300 feet. 2. and 11 are limited to 500 feet (400 feet where split lanes are necessary).



Know what's below. Call before you dig.



1 SITE ELECTRICAL PLAN
1" = 20'-0"

No.	Description	Date

Project number 130911.44
 Date 6/9/2020
 Drawn by G. GARCIA
 Checked by D. FERRANTI

FERRANTI ENGINEERING
 CONSULTING ELECTRICAL ENGINEERS
 1211 MARICOPA HWY., SUITE 250
 OJAI, CA 91323
 (805) 705-4772
 DALEFERRANTI@LIVE.COM



Stitch Studio
 Contact: Jorge Escamilla
 4082 Pomona Street
 Ventura, California 93003
 Direct: 818.523.7261
 Email: stitchstudio6@gmail.com

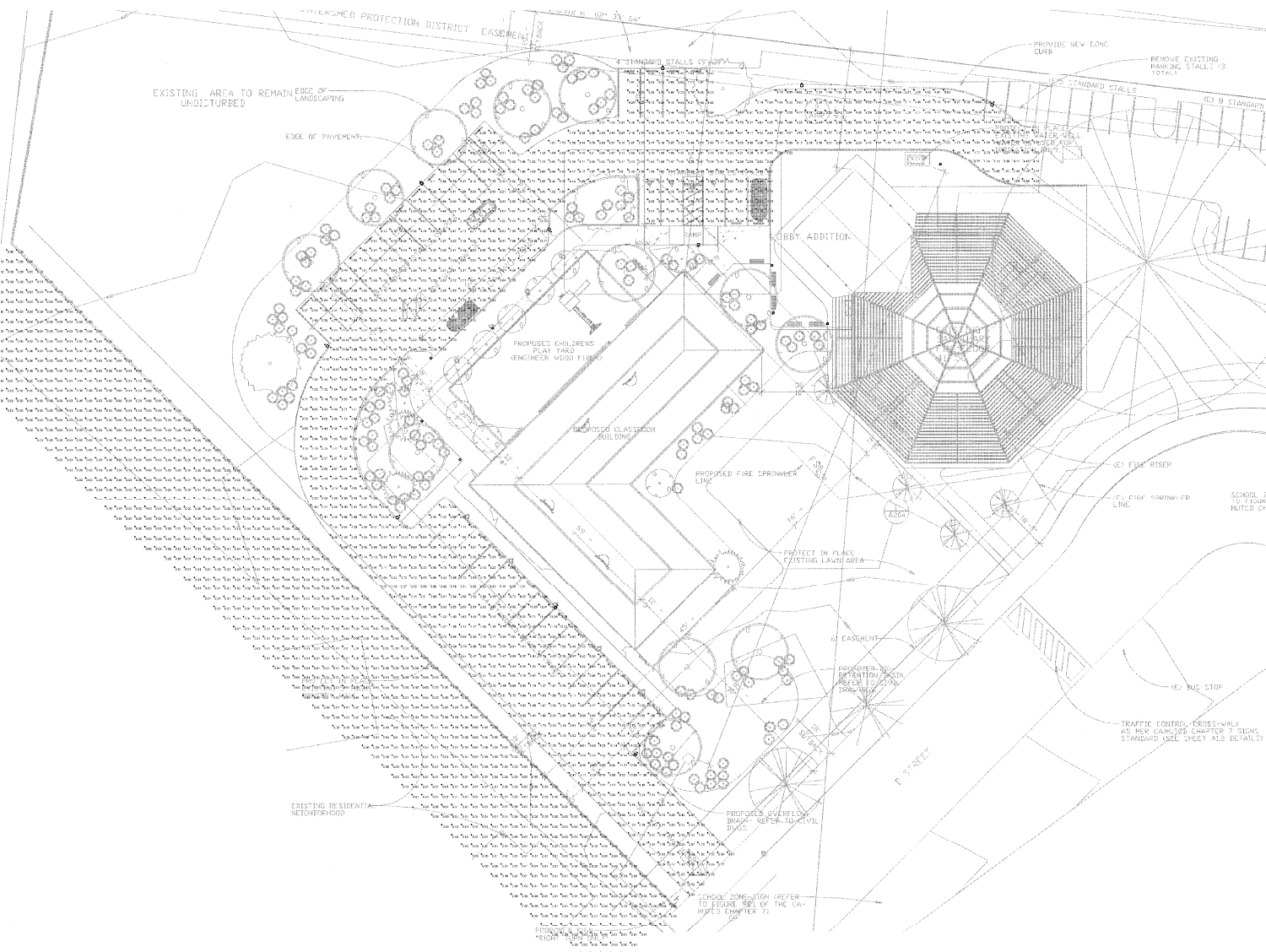
FAITH COMMUNITY CHURCH
 CLASSROOM BUILDING - CONSTRUCTION DOCUMENT PHASE
 355 D Street, Fillmore CA.

SITE ELECTRICAL PLAN

PERMIT SUBMITTAL

E2.0

Scale AS NOTED



- CONTRACTOR SHALL CALL UNDERGROUND SERVICE AGENCY AT 811 TO LOCATE UNDERGROUND UTILITIES PRIOR TO ANY TRENCHING. CONTRACTOR SHALL FIELD VERIFY LOCATION AND DEPTH OF EXISTING IMPROVEMENTS PRIOR TO START OF CONSTRUCTION.
- VERIFY LOCATION OF ALL BUILDINGS AND APPURTENANCES ON ARCHITECTURAL AND CIVIL PLANS.
- FIELD VERIFY LOCATION ON ALL UNDERGROUND UTILITIES PRIOR TO TRENCHING. SCOPE AND COORDINATE ALL SITE WORK WITH OWNER PRIOR TO ANY TRENCHING.
- CONTRACTOR SHALL VERIFY LOCATION & REQUIREMENTS OF ALL DEVICES/EQUIPMENT REQUIRING ELECTRICAL SERVICE PRIOR TO BID PROPOSAL, ROUGH-IN, AND FINISH.
- CONTRACTOR SHALL, IN ROUTING ALL CIRCUITS, INCREASE CONDUIT SIZE TO ALLOW FOR VOLTAGE DROP SHOULD THE CONTRACTOR EXCEED ROUTING INDICATED ON DRAWINGS. CONTRACTOR SHALL PROVIDE VOLTAGE DROP IN ANY SUBMITTAL FROM APPROVED PLUMBING (SEE DRAWINGS).
- ALL 90 DEGREE CONDUIT BENDS AND RISERS SHALL BE PVC COATED RIGID STEEL.
- CONTRACTOR SHALL EQUIP AND PROVIDE ALL SITE ELECTRICAL SERVICE REQUIREMENTS WITH ELECTRICAL ENGINEER FOR APPROVAL.
- ALL SERVICE ENTRANCE EQUIPMENT SHOP DRAWINGS SHALL BE SUBMITTED TO THE LOCAL UTILITY COMPANY FOR APPROVAL. WITH WRITTEN APPROVAL RECEIVED PRIOR TO SUBMISSION TO ELECTRICAL ENGINEER FOR APPROVAL.
- VERIFY LOCATION OF ALL EQUIPMENT ON ARCHITECTURAL AND CIVIL PLANS.
- MINIMUM CONDUIT BURIAL DEPTH IS 24" 36" MINIMUM BELOW STREETS AND PARKING LOTS. FOR 0-90 VOLT SYSTEMS.
- PROVIDE CODE SIZED EQUIPMENT GROUNDING CONDUITORS IN ALL OCCUPIED CONDUITS.
- 1" CONDUIT MINIMUM UNDERGROUND.
- COORDINATE WORK WITH OTHER TRADES. OBTAIN ALL PERMITS THAT WILL REQUIRE COORDINATION AND PROVIDE ALL ELECTRICAL CONNECTIONS, SIZES AND RISERS REQUIRED. INDICATE SHOWN ON THE ELECTRICAL DRAWINGS OR NOT.
- CONTRACTOR SHALL FINISH AND INSTALL PULL BOXES AS REQUIRED TO INSTALL CONDUITORS PER CONDUIT MANUFACTURER'S RECOMMENDATIONS PER THE NATIONAL ELECTRICAL CODE AND PER LOCAL AUTHORITIES HAVING JURISDICTION.
- FIELD CONDITIONS GOVERN EXPOSITION AND NEW CONSTRUCTION. CONTRACTOR SHALL VERIFY THAT ACTUAL CONDITIONS PRIOR TO START OF WORK. THE ARCHITECT/ENGINEER SHALL BE NOTIFIED OF POSSIBLE FIELD PROBLEMS PRIOR TO EXPOSITION. CONTRACTOR SHALL NOTIFY DISTRICT REPRESENTATIVE OF WORK BEING PERFORMED. COORDINATE WITH DISTRICT REPRESENTATIVE.
- ALL DUFFY CONDUITS SHALL BE PROVIDED WITH ENLARGED NYLON PULL STRIPS.
- CONTRACTOR SHALL FIELD VERIFY LOCATION OF ALL UNDERGROUND UTILITIES PRIOR TO AND DOWNHOLE OR TRENCHING. CONTRACTOR SHALL PROTECT ALL EXISTING/REMAINING UTILITIES IN PLACE. CONTRACTOR, AT HIS SOLE EXPENSE, SHALL REMOVE AND REPAIR ANY UTILITIES DAMAGED DURING CONSTRUCTION.

LUMINAIRE SCHEDULE						
Symbol	Label	Qty	Catalog Number	Description	Lamp	File
□	P3	4	ECF-3-135LA-647D-MV	ECOFORM	(FLIGHT ARRAY OF 84 LEDS DRUCK-AT 700MA)	ECF-3-135LA-647D-MV
□	P2	6	ECF-2-132LA-647D-MV	ECOFORM	(FLIGHT ARRAY OF 84 LEDS DRUCK-AT 700MA)	ECF-2-132LA-647D-MV
□	B	4	VSB1-150LX-CAST ALUMINUM DOME AND LOUVERS ATTACHED TO AN ALUMINUM RISER. TEMPERED CLEAR GLASS.		15 LEEDS 4200K	vsl1-150lx.k
□	E	4	VSB1-201LX-CAST ALUMINUM DOME AND LOUVERS ATTACHED TO AN ALUMINUM RISER. TEMPERED CLEAR GLASS.		20 LEEDS 4200K	vsl1-201lx.k

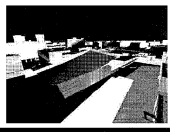
STATISTICS						
Description	Symbol	Avg	Max	Min	Max/Min	Avg/Min
Lighting Soil Zone	+	0.00 ft.	6.02 ft.	0.00 ft.	N/A	N/A
Parking Lot	+	3.86 ft.	14.35 ft.	0.29 ft.	62.41	16.71

1 SITE PHOTOMETRIC PLAN
1" = 20'-0"

No.	Description	Date

Project number: 130911.44
Date: 6/9/2020
Drawn by: G. GARCIA
Checked by: D. FERRANTI

FERRANTI ENGINEERING
CONSULTING ELECTRICAL ENGINEERS
1211 MARICOPA HWY,
SUITE 250
OJAI, CA 91303
(805) 715-4772
DALEFERRANTI@LIVE.COM



Stitch Studio
Contact: Jorge Escamilla
4882 Pomona Street
Westvale, California 95086
Direct: 818.523.7201
Email: stitchstudio36@gmail.com

FAITH COMMUNITY CHURCH
CLASSROOM BUILDING - CONSTRUCTION DOCUMENT PHASE
355 D Street, Fillmore CA.

PERMIT SUBMITTAL

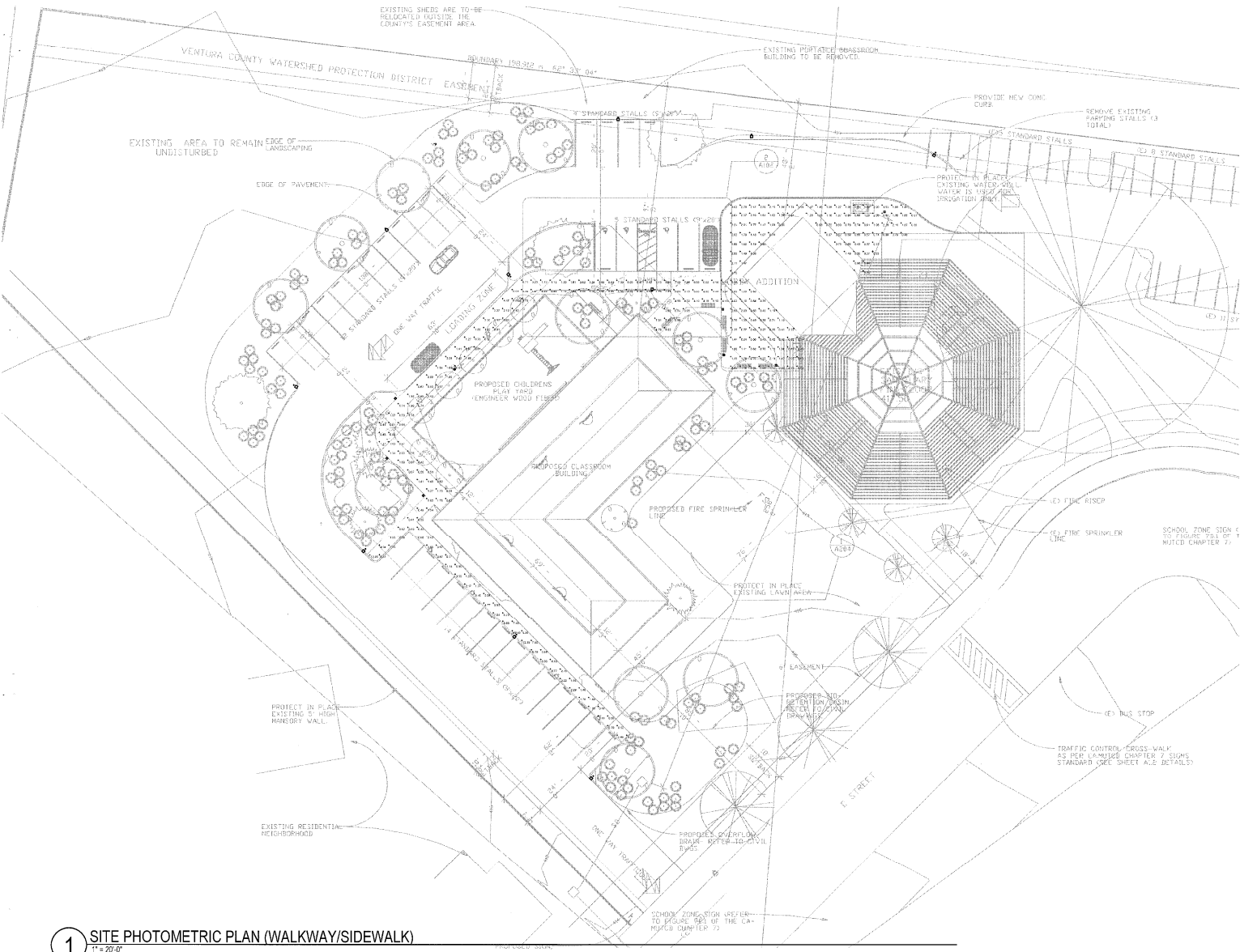
E2.1

SITE PHOTOMETRIC PLAN

Scale: AS NOTED

SHEET NOTES

1. CONTRACTOR SHALL CALL MEASUREMENTS SERVICE ALERT AT 811 TO LOCATE UNDERGROUND UTILITIES AT LEAST 2 WORKING DAYS PRIOR TO ROOFING. CONTRACTOR SHALL VERIFY LOCATION AND DEPTH OF EXISTING INFRASTRUCTURE PRIOR TO START OF CONSTRUCTION.
2. VERIFY LOCATION OF ALL BUILDINGS AND APPURTENANCES ON ARCHITECTURAL AND CIVIL PLANS.
3. FIELD VERIFY LOCATION ON ALL UNDERGROUND UTILITIES PRIOR TO TRENCHING, SCHEDULE AND COORDINATE ALL SITE WORK WITH OWNER PRIOR TO ANY TRENCHING.
4. CONTRACTOR SHALL VERIFY LOCATION & REQUIREMENTS OF ALL DEVICES/EQUIPMENT REQUIRING ELECTRICAL CONNECTION PRIOR TO BID PROPOSAL, ROUGH-IN, AND FINISH.
5. CONTRACTOR SHALL, IN ALL ROOFING FALLS TO ALLOW FOR VOLTAGE DROP, SHALL BE THE CONTRACTOR EXCEED ROOFING INDICATED ON DRAWINGS. ENGINEER OF RECORD MUST BE NOTIFIED PRIOR TO ANY DEVIATIONS FROM APPROVED PLAN CHECK (PERMIT SETS DRAWINGS).
6. ALL 90 DEGREE CONDUIT BENDS AND RISERS SHALL BE PVC COATED RIB STEEL.
7. CONTRACTOR SHALL COORDINATE AND PROVIDE ALL SITE ELECTRICAL SERVICE REQUIREMENTS WITH SPRING UTILITY.
8. ALL SERVICE ENTRANCE EQUIPMENT SHIP DRAWING SHALL BE SUBMITTED TO THE LOCAL UTILITY COMPANY FOR APPROVAL, WITH WRITTEN APPROVAL, RESERVE PROOF TO SUBMISSION TO ELECTRICAL ENGINEER FOR APPROVAL.
9. VERIFY LOCATION OF ALL EQUIPMENT ON ARCHITECTURAL AND CIVIL PLANS.
10. MINIMUM CONDUIT BURIAL DEPTH IS 24" 36" MINIMUM BELOW STREETS AND PARKING LOTS, FOR 0-600 VOLT SYSTEMS.
11. PROVIDE CODE LISTED EQUIPMENT BRACING CONDUCTORS IN ALL OCCUPIED CONDUITS.
12. 1" CONDUIT MINIMUM UNDERGROUND.
13. COORDINATE WORK WITH OTHER TRADES OBTAIN ALL DRAWINGS THAT WILL REQUIRE COORDINATION AND PROVIDE ALL ELECTRICAL CONNECTIONS, SERVICES AND WIRING REQUIRED, WHETHER SHOWN ON THE ELECTRICAL DRAWINGS OR NOT.
14. CONTRACTOR SHALL FURNISH AND INSTALL FULL BOXES AS REQUIRED TO INSTALL CONDUITORS PER MANUFACTURER'S RECOMMENDATIONS FOR THE NATIONAL ELECTRICAL CODE, AND FOR LOCAL AUTHORITIES HAVING JURISDICTION.
15. FIELD ENGINEER/GOVERNOR DEMONSTRATION AND NEW CONSTRUCTION, CONTRACTOR SHALL VERIFY ACTUAL CONDUIT DEPTH PRIOR TO START WORK. THE ARCHITECT/ENGINEER SHALL BE NOTIFIED OF POSSIBLE FIELD PROBLEMS PRIOR TO DEMOLITION. CONTRACTOR SHALL NOTIFY DISTRICT REPRESENTATIVE, IF WORK BEING PERFORMED, COORDINATE WITH DISTRICT REPRESENTATIVE.
16. ALL DUFFY CONDUITS SHALL BE PROVIDED WITH DIMENSIONED H/UN FULL STRIKE.
17. CONTRACTOR SHALL FIELD VERIFY LOCATION OF ALL UNDERGROUND UTILITIES PRIOR TO AND SHALL PROTECT ALL EXISTING/REMAINING UTILITIES IN PLACE. CONTRACTOR AT HIS SOLE EXPENSE, SHALL REMOVE ANY UTILITY SYSTEMS DAMAGED DURING CONSTRUCTION.



LUMINAIRE SCHEDULE									
Symbol	Label	Qty	Category Number	Description	Lamp	File	Lumens	LF/F	Watts
□	B15	4		VANDAL RESISTANT ALUMINUM DOME AND DOWNERS ATTACHED TO AN ALUMINUM RISER. TEMPERED CLEAR GLASS.	15 LEDS, 4200K	vsl-154k.asx	Absolute	0.90	15.1
□	B00	4	V584-205.4K	VANDAL RESISTANT SQUARE RECESSED LED CAST ALUMINUM DOME AND DOWNERS. (1) DOWNER TO AN ALUMINUM RISER. TEMPERED CLEAR GLASS.	20 LEDS, 4200K	vsl-204k.asx	Absolute	0.90	24.2
—	ST	4		Lighting recessed w/ mounted LED luminaire. Call No. 18L-2-ALED (Double-impact). White polycarbonate mounted recessed LED with rectangular aperture. Luminaire opening 3.27" W x 1.87" H. Two LED PCBs mounted to black aluminum downer, mounted to white cast metal housing. One Torx Tech white power supply. Part# TCC010-327. See sheet 011224-001 120V @ 0.016A. Tested in recessed enclosure simulating wall mount @ 120V/60Hz.	Lighting 4 x 2-ALED Double-impact LEDs		Absolute	0.90	4.95

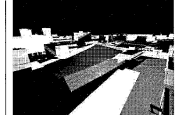
STATISTICS						
Description	Symbol	Avg	Max	Min	Max/Min	Avg/Min
Calc Zone #2	+	2.19' ft	12.85' ft	0.22' ft	55.9:1	9.5:1

1 SITE PHOTOMETRIC PLAN (WALKWAY/SIDEWALK)
1" = 20'

No.	Description	Date

Project number: 130911.44
Date: 6/9/2020
Drawn by: G.GARCIA
Checked by: D.FERRANTI

FERRANTI ENGINEERING
CONSULTING ELECTRICAL ENGINEERS
1211 MARICOPA HWY, SUITE 250
OJAI, CA 93023
(805) 705-4772
DALEFERRANTI@LIVE.COM

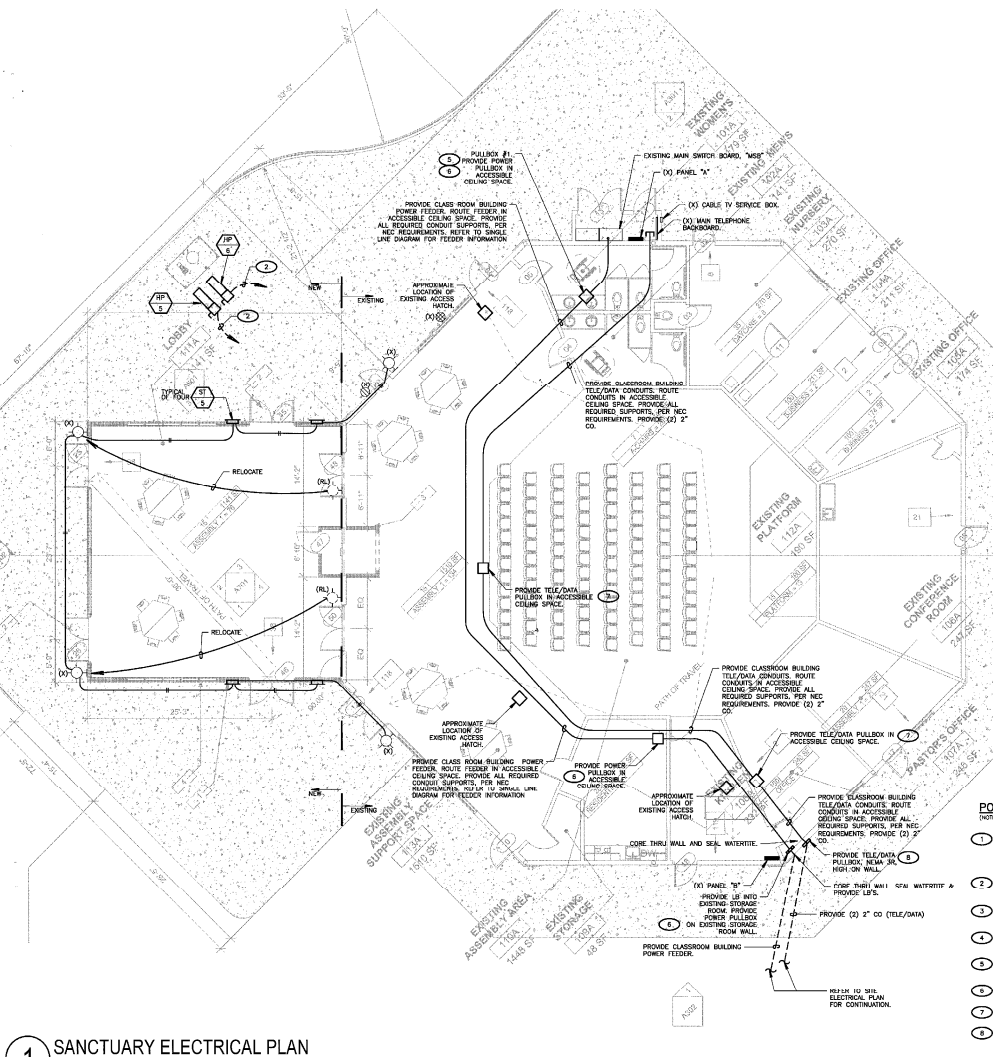


Stitch Studio
Contact: Jorge Escamilla
4882 Pomona Street
Ventura, California 93003
Direct: 818-623-7291
Email: stitchstudio3d@gmail.com

FAITH COMMUNITY CHURCH
CLASSROOM BUILDING - CONSTRUCTION DOCUMENT PHASE
355 D Street, Fillmore CA.

PERMIT SUBMITTAL
E2.2
Scale: AS NOTED

SITE PHOTOMETRIC PLAN



1 SANCTUARY ELECTRICAL PLAN
1/8" = 1'-0"

LIGHTING KEY NOTES

- 1. PROVIDE 1" CONDUIT PLUS WITH PLASTIC BUSHING TO ACCESSIBLE CEILING SPACE. REMOVE 1/2" MAIN SERVICE PER TERMINATED CABLE FROM MAIN SERVICE TO ROOM CONTROLLER. VERIFY & PROVIDE PER MANUFACTURER'S INSTALLATION INSTRUCTIONS. CONTRACTOR SHALL VERIFY ALL REQUIRED CABLE LENGTHS.
- 2. DUAL TECHNOLOGY CEILING MOUNT EQUIPMENT SHOULD BE MOUNTED TO 4" ODD SPACING. J-BOX WATERSTOPPER, BUSHING AND WIRE BUSHING PROVIDED PER MANUFACTURER'S INSTALLATION INSTRUCTIONS.
- 3. PROVIDE ENDING WALL SWITCH WATERSTOPPER, LOW VOLTAGE DAMPING WALL SWITCH, 1/2" O.D. IN. MOUNT IN WALL. VERIFY & PROVIDE PER MANUFACTURER'S INSTALLATION INSTRUCTIONS. COORDINATE COLOR/FINISH W/ OWNER OR ARCHITECT PRIOR TO ORDERING.
- 4. PROVIDE WATERSTOPPER, LMRU SERIES PRE-TERMINATED CABLE W/ RJ-45 JACKS. ROUTE TO ROOM CONTROLLER. VERIFY & PROVIDE PER MANUFACTURER'S INSTALLATION INSTRUCTIONS. CONTRACTOR SHALL VERIFY ALL REQUIRED CABLE LENGTHS.
- 5. ONE RELAY ROOM CONTROLLER LOCATE IN ACCESSIBLE CEILING SPACE. COORDINATE EXACT LOCATION IN THE FIELD. MOUNT TO BOX FOR INSTALLATION INSTRUCTIONS. PROVIDE WATERSTOPPER, JLMRC-211.
- 6. PROVIDE WATERSTOPPER, LMRU SERIES PRE-TERMINATED CABLE W/ RJ-45 JACKS. VERIFY & PROVIDE PER MANUFACTURER'S INSTALLATION INSTRUCTIONS. CONTRACTOR SHALL VERIFY ALL REQUIRED CABLE LENGTHS.

POWER/ELECTRICAL PLAN KEY NOTES

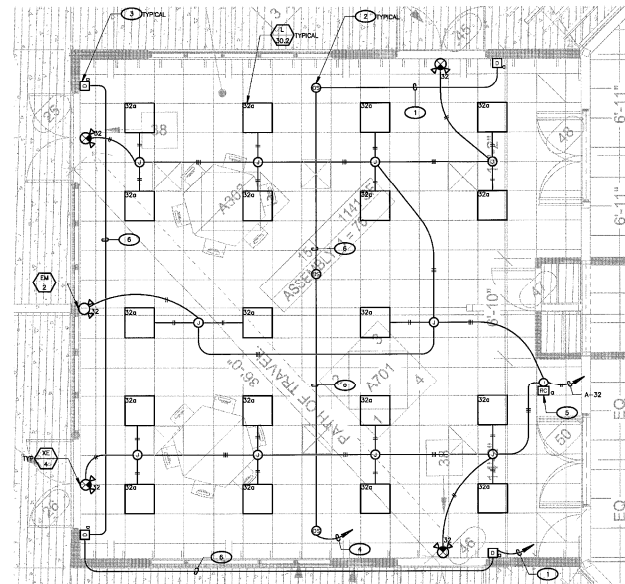
- 1. PROVIDE AS BOX W/ SINGLE GANG PLASTER RING & 1/2" O.D. TO ACCESSIBLE CEILING SPACE (1" FROM CEILING WITH PLASTIC BUSHING AT END). VERIFY EXACT LOCATION W/ MECHANICAL.
- 2. SEE ELECTRICAL SCHEDULE FOR MECHANICAL EQUIPMENT FOR DISCONNECT, FEEDER, REVER, REVER, ETC. REQUIREMENTS.
- 3. PROVIDE BELL EXTRA DUTY METAL WALL-HUNG COVER, 1" O.D. VERTICAL GFCI TYPE, BELL #881-0.
- 4. PROVIDE RECEPTACLE IN ACCESSIBLE CEILING SPACE FOR CONDENSATE LET PUMP.
- 5. PROVIDE REBAR IN BOXES. COORDINATE REDUCE FEEDER SIZE. REFER TO SINGLE LINE DIAGRAM.
- 6. PROVIDE NEMA 3 SCREW COVER ENCLOSURE, 30" X 18" X 6".
- 7. PROVIDE NEMA 3 SCREW COVER ENCLOSURE, 24" X 18" X 6".
- 8. PROVIDE NEMA 3R SCREW COVER ENCLOSURE, 24" X 24" X 6".

LIGHTING SHEET NOTES

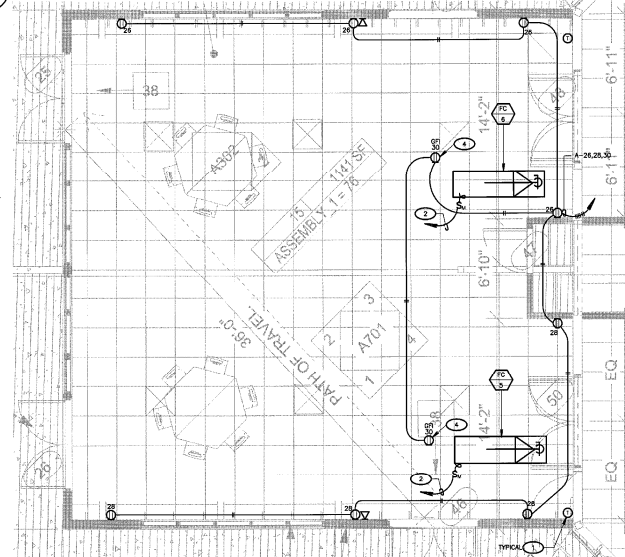
- 1. CONTRACTOR SHALL VERIFY LOCATION, CEILING TYPE, TRAIL AND REQUIREMENTS OF ALL LIGHT FIXTURES AND CONTROL PRIOR TO BID. PROVISION, PULL-IN AND FINISH INSTALLATION.
- 2. CONTRACTOR SHALL, IN ROUTING ALL CIRCUITS, INCREASE CONDUIT & CABLE SIZE TO ALLOW FOR VOLTAGE DROP. SHOULD THE CONTRACTOR EXCEED ROUTING INCHES ON DRAWINGS, ENGINEER OF RECORD MUST BE NOTIFIED PRIOR TO ANY DEVIATIONS FROM APPROVED PLAN CHECK (PERMIT SET) DRAWINGS.
- 3. CONTRACTOR SHALL FINISH AND INSTALL PULL BOXES AS REQUIRED TO INSTALL CONDUIT PER CONDUCTOR MANUFACTURER'S RECOMMENDATIONS. PER THE NATIONAL ELECTRICAL CODE AND PER LOCAL AUTHORITIES HAVING JURISDICTION.
- 4. 3/4" CONDUIT MINIMUM, UNLESS OTHERWISE NOTED.
- 5. ALL LIGHTING FIXTURES SHALL BE SECONDARILY SUPPORTED WITH SWAYE CABLES, PROVIDED BY CONTRACTOR.
- 6. VERIFY LOCATION OF ALL DEVICES ON ARCHITECTURAL PLANS.
- 7. MAINTAIN A MINIMUM 2% VOLTAGE DROP ON ALL LIGHTING HOURGLASS.
- 8. ALL INT. SINKS ARE 1/2" TO CENTER LINE OF FIXTURE ABOVE DOOR FRAME, UNLESS OTHERWISE NOTED.
- 9. CONTRACTOR SHALL PROVIDE ALL BACKING BRACKETS, SUPPORTS AND TERMINAL FASTENERS. REFER TO PERMITS FOR INSTALLATION REQUIREMENTS.
- 10. VERIFY THE EXACT ROOF OF ALL EXPOSED CONDUIT WITH OWNER PRIOR TO INSTALLATION.
- 11. COORDINATE WORK WITH OTHER TRADES. OBTAIN ALL DRAWINGS THAT WILL REQUIRE COORDINATION AND PROVIDE ALL ELECTRICAL CONNECTIONS, CONDUITS AND WIRING REQUIRED WHETHER SHOWN ON THE ELECTRICAL DRAWINGS OR NOT.
- 12. PROVIDE CODE SIZED EQUIPMENT GROUNDING CONDUCTOR IN ALL LIGHTING SYSTEMS.
- 13. ALL ELECTRICAL WORK SHALL BE IN ACCORDANCE WITH THE NATIONAL ELECTRICAL CODE AND PER LOCAL AUTHORITIES HAVING JURISDICTION.
- 14. ALL LIGHTING FIXTURES, EXCEPT EMERGENCY, SHALL BE CONTROLLED BY THE CENTRAL CONTROL SYSTEM AS REQUIRED BY STATE OF CALIFORNIA TITLE 24 REGULATIONS.

POWER SHEET NOTES

- 1. CONTRACTOR SHALL VERIFY LOCATION & REQUIREMENTS OF ALL DEVICES REQUIRING ELECTRICAL CONNECTION PRIOR TO BID. PROVISION, PULL-IN AND FINISH.
- 2. CONTRACTOR SHALL, IN ROUTING ALL CIRCUITS, INCREASE CONDUIT & CABLE SIZE TO ALLOW FOR VOLTAGE DROP. SHOULD THE CONTRACTOR EXCEED ROUTING INCHES ON DRAWINGS, ENGINEER OF RECORD MUST BE NOTIFIED PRIOR TO ANY DEVIATIONS FROM APPROVED PLAN CHECK (PERMIT SET) DRAWINGS.
- 3. COORDINATE WORK WITH OTHER TRADES. OBTAIN ALL DRAWINGS THAT WILL REQUIRE COORDINATION AND PROVIDE ALL ELECTRICAL CONNECTIONS, CONDUITS AND WIRING REQUIRED WHETHER SHOWN ON THE ELECTRICAL DRAWINGS OR NOT.
- 4. CONTRACTOR SHALL FINISH AND INSTALL PULL BOXES AS REQUIRED TO INSTALL CONDUIT PER CONDUCTOR MANUFACTURER'S RECOMMENDATIONS. PER THE NATIONAL ELECTRICAL CODE AND PER LOCAL AUTHORITIES HAVING JURISDICTION.
- 5. 3/4" CONDUIT MINIMUM, UNLESS OTHERWISE NOTED.
- 6. PROVIDE CODE SIZED EQUIPMENT GROUNDING CONDUCTORS IN ALL OCCUPIED CONDUITS.
- 7. PROVIDE CONDUITS FOR MECHANICAL EQUIPMENT PER MECHANICAL DOCUMENTS. VERIFY LOCATION AND REQUIREMENTS OF MECHANICAL EQUIPMENT ON MECHANICAL DOCUMENTS.
- 8. VERIFY LOCATION OF ALL DEVICES ON ARCHITECTURAL PLANS.
- 9. ALL CONDUIT RUNS SHALL BE CONCEALED IN WALLS OR ROUTED ABOVE THE CEILING/ACCESSIBLE CEILING SPACE.
- 10. ALL FURNITURE FEED LOCATIONS SHALL BE VERIFIED WITH ARCHITECT AND FURNITURE VENDOR PRIOR TO ROUGH-IN.
- 11. ALL RECEPTIONS THROUGH FIRE RATED WALLS SHALL BE PROTECTED FROM THE SIGNAL OF THE FIRE AS APPROVED FIRESTOP SYSTEM EQUAL TO OR GREATER THAN THE RATING OF THE WALL.
- 12. MOUNTING HEIGHT OF ALL RECEPTACLES AT COUNTER TOPS SHALL BE VERIFIED WITH ARCHITECT PRIOR TO ROUGH-IN.
- 13. PROVIDE GFCI TYPE RECEPTACLE WITHIN 6 FEET OF ANY SINK.
- 14. CONTRACTOR SHALL COORDINATE ALL ELECTRIFIED FURNITURE SYSTEMS. COORDINATE WITH MECHANICAL DOCUMENTS. VERIFY LOCATION AND REQUIREMENTS OF MECHANICAL EQUIPMENT. PROVIDE ALL REQUIREMENTS WITH FURNITURE SYSTEM VENDOR/SUPPLIER.
- 15. CONTRACTOR SHALL PROVIDE A PERMANENT MARKING IN ORDER TO DIFFERENTIATE OCCUPANCY CONTROLLED RECEPTACLES FROM THE UNCONTROLLED RECEPTACLES. VERIFY ACCEPTABLE MEANS OF PERMANENT MARKING WITH THE AIA.



2 SANCTUARY LOBBY ADDITION LIGHTING PLAN
1/4" = 1'-0"



3 SANCTUARY LOBBY ADDITION POWER PLAN
1/4" = 1'-0"

No.	Description	Date

Project number: 130911.44
Date: 6/9/2020
Drawn by: G. GARCIA
Checked by: D. FERRANTI

FERRANTI ENGINEERING
CONSULTING ELECTRICAL ENGINEERS
1211 MARICOPA HWY., SUITE 250
OJAI, CA 93023
(805) 705-4772
DALEFERRANTI@LIVE.COM



Stitch Studio
Contract: Jorge Escamilla
4682 Tompkins Street
Ventura, California 93003
Direct: 818.523.7281
Email: stitchstudio3@gmail.com

FAITH COMMUNITY CHURCH
CLASSROOM BUILDING - CONSTRUCTION DOCUMENT PHASE
355 D Street, Fillmore, CA.
SANCTUARY LOBBY ADDITION
POWER & LIGHTING PLAN

PERMIT SUBMITTAL
E3.0
Scale: AS NOTED

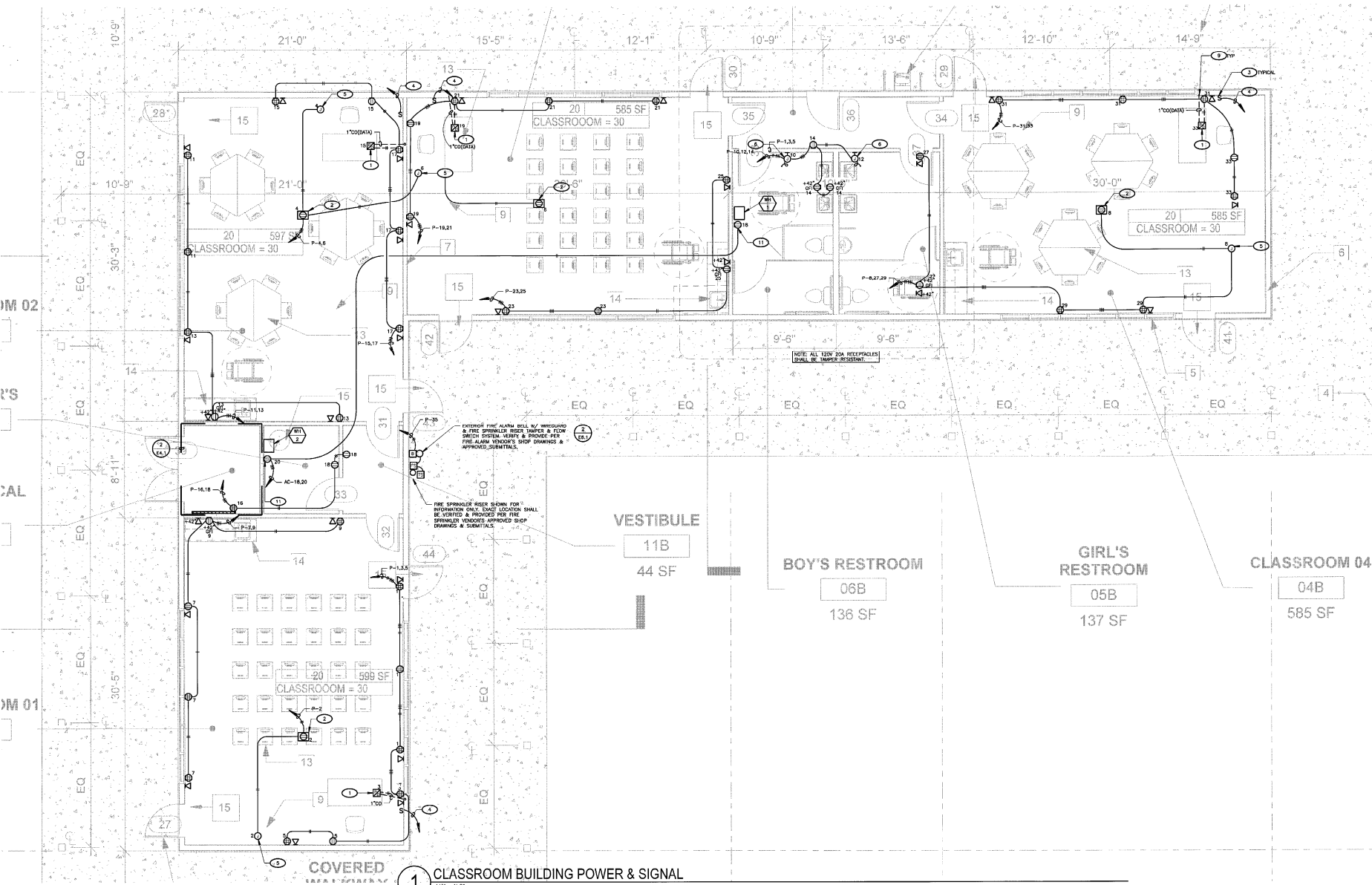
POWER SHEET NOTES

- CONTRACTOR SHALL VERIFY LOCATION & REQUIREMENTS OF ALL DEVICES REQUIRING ELECTRICAL CONNECTION PRIOR TO ANY FORMAL ROOM-IN OR FINISH.
- CONTRACTOR SHALL IN ROUTING ALL CIRCUITS, INCREASE CONDUCTOR & CONDUIT SIZE TO ALLOW FOR VOLTAGE DROP SHOULD THE CONTRACTOR EXCEED ROOMING BE NOTIFIED PRIOR TO ANY DEVIATIONS FROM APPROVED PLAN CHECK (PRINT SET) DRAWINGS.
- COORDINATE WORK WITH OTHER TRADES. OBTAIN ALL DRAWINGS THAT WILL REQUIRE COORDINATION AND PROVIDE ALL ELECTRICAL CONDUIT LOCATIONS AND WIRING REQUIRED WHETHER SHOWN ON THE ELECTRICAL DRAWINGS OR NOT.
- CONTRACTOR SHALL FURNISH AND INSTALL PULL BOXES PER MECHANICAL CONTRACTOR'S LOCATION AND REQUIREMENTS OF BELOW MECHANICAL EQUIPMENT OR MECHANICAL DOCUMENTS.
- VERIFY LOCATION OF ALL DEVICES ON ARCHITECTURAL PLANS.
- 3/4" CONDUIT MINIMUM SIZE.
- PROVIDE CODE SIZED EQUIPMENT ORIGINATING CONDUCTORS IN ALL OCCUPIED CONDUITS.
- PROVIDE CONTROLS FOR MECHANICAL EQUIPMENT PER MECHANICAL CONTRACTOR'S LOCATION AND REQUIREMENTS OF BELOW MECHANICAL EQUIPMENT OR MECHANICAL DOCUMENTS.
- VERIFY LOCATION OF ALL DEVICES ON ARCHITECTURAL PLANS.
- ALL CONDUIT RUNS SHALL BE CONCEALED IN WALLS OR ROUTED ABOVE THE CEILING/ACCESSIBLE WALLS SHALL BE PROTECTED FROM THE SPREAD OF FIRE WITH AN APPROVED FIRE RATED PENETRATION DEVICE GREATER THAN THE RATING OF THE WALL.
- MOUNTING HEIGHT OF ALL RECEPTACLES AT COUNTERTOP TO ROUGH-IN.
- PROVIDE GFCI TYPE RECEPTACLE WITHIN 6 FEET OF ANY SINK.
- DEDICATED NEUTRALS SHALL BE RUN WITH 120V, 15A & 20A BRANCHED CIRCUITS.

KEY NOTES

(NOTE: THESE NOTES MAY NOT APPEAR ON ALL SHEETS)

- PROVIDE RECESSED, FOUR-COMPARTMENT FLOOR BOX FOR POWER/DATA, MEDIUM VOLTAGE WITH SPACED GRID COVER WITH ARCHITECT PRIOR TO ORDERING. PROVIDE (2) TRANSDUCER RECEPTACLE BRACKETS WITH TYPED RECEPTACLE AND (2) RECEPTION BRACKETS FOR CRITERION TRACKING DEVICES. COORDINATE EXACT LOCATION WITH OWNER/ARCHITECT PRIOR TO ROUGH-IN.
- CEILING MOUNTED FLOOR RECEPTACLE FOR PROJECTOR. VERIFY EXACT LOCATION W/ARCHITECT PRIOR TO ROOM-IN.
- ELECTRIC SCREEN CONTROL SWITCH. VERIFY AND PROVIDE POWER PER VENDOR'S SHOP DRAWINGS AND APPROVED SUBMITTALS. VERIFY EXACT LOCATION W/ARCHITECT PRIOR TO ROUGH-IN.
- 3/4" C. WITH ALL REQUIRED CONTROLS CONDUITORS TO ELECTRIC SCREEN. VERIFY AND PROVIDE POWER/CONTROLS CONDUITORS PER VENDOR'S SHOP DRAWINGS AND APPROVED SUBMITTALS.
- J-BOX IN ACCESSIBLE CEILING SPACE FOR CONNECTION TO ELECTRIC SCREEN MOTOR. VERIFY EXACT LOCATION WITH OWNER/ARCHITECT PRIOR TO ROUGH-IN. VERIFY AND PROVIDE POWER AND CONTROLS PER VENDOR'S SHOP DRAWINGS AND APPROVED SUBMITTALS.
- J-BOX FOR CONNECTION TO ELECTRIC HAND DRIVER. VERIFY & PROVIDE ALL REQUIRED POWER CONNECTIONS. COORDINATE EXACT LOCATION W/ARCHITECT PRIOR TO ROUGH-IN.
- PLUS LOAD ROOM CONTROLLER. PROVIDE WATTSTOPPER, BLUE-101 LOCKS IN ACCESSIBLE CEILING SPACE & MOUNT TO J-BOX PER INSTALLATION INSTRUCTIONS. VERIFY & PROVIDE ALL WIRING CONNECTIONS & MATERIALS PER MANUFACTURER'S INSTALLATION INSTRUCTIONS.
- PROVIDE WATTSTOPPER, LMR1 SERIES PRE-TERMINATED CABLE 1/4" 30-45 JACKS. ROUTE TO ROOM CONTROLLER ASSOCIATED WITH ROOM. VERIFY & PROVIDE PER MANUFACTURER'S INSTALLATION INSTRUCTIONS. CONTRACTOR SHALL FIELD VERIFY ALL REQUIRED CABLE LENGTHS.
- RISE TELE/DATA SYSTEM CONDUIT UP IN WALL. STRIP-UP TO ACCESSIBLE CEILING SPACE (1" MIN). PROVIDE CONDUIT BUSHING AT ENO.
- PROVIDE WATTSTOPPER, LMR1 SERIES PRE-TERMINATED CABLE 1/4" 30-45 JACKS. VERIFY & PROVIDE PER MANUFACTURER'S INSTALLATION INSTRUCTIONS. CONTRACTOR SHALL FIELD VERIFY ALL REQUIRED CABLE LENGTHS.
- WATER HEATER SHALL BE WIRED FOR PLUS PER POWER COMPANY AND WIRE BLUE BARGE PROTECTED RECEPTACLE W/AMBIENT LIGHT ADAPTER TO WATER HEATER. COORDINATE ALL WORK & LOCATIONS W/MECHANICAL.

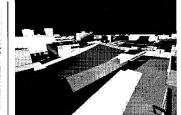


1 CLASSROOM BUILDING POWER & SIGNAL
1/4" = 1'-0"

No.	Description	Date

Project number: 13081144
Date: 6/9/2020
Drawn by: G. GARCIA
Checked by: D. FERRANTI

FERRANTI ENGINEERING
CONSULTING ELECTRICAL ENGINEERS
1211 MARICOPA HWY,
SUITE 250
OJAI, CA 93023
(805) 705-4772
DALEFERRANTI@LIVE.COM



Stitch Studio
Contact: Jorge Escamilla
4082 Potomac Street
Venura, California 93003
Direct: 818.920.7201
Email: stitchstudio34@gmail.com

FAITH COMMUNITY CHURCH
CLASSROOM BUILDING - CONSTRUCTION DOCUMENT PHASE
355 D Street, Fillmore CA.
CLASSROOM POWER & SIGNAL PLAN

PERMIT SUBMITTAL
E4.0
Scale: AS NOTED

LIGHTING SHEET NOTES

- CONTRACTOR SHALL VERIFY LOCATION, CEILING TYPE, TYPED AND REQUIREMENTS OF ALL LIGHT FIXTURES AND CONTROL TRAYS TO BE PROVIDED. ROOM-IN-FINISH INSTALLATION SHALL BE VERIFIED PRIOR TO INCREASE CONDUCTOR & CONDUIT SIZE TO ALLOW FOR VOLTAGE DROP. BEFORE ORDERING, THE CONTRACTOR SHALL OBTAIN RECORD DRAWINGS FROM APPROVED PLAN CHECK (PERMIT SET) DRAWINGS.
- CONTRACTOR SHALL IN ROUTING ALL CIRCUITS, INCREASE CONDUCTOR & CONDUIT SIZE TO ALLOW FOR VOLTAGE DROP. BEFORE ORDERING, THE CONTRACTOR SHALL OBTAIN RECORD DRAWINGS FROM APPROVED PLAN CHECK (PERMIT SET) DRAWINGS.
- CONTRACTOR SHALL FURNISH AND INSTALL SHALL BE AS REQUIRED TO INSTALL CONDUIT PER CONDUCTOR MANUFACTURER'S RECOMMENDATIONS. FOR THE NATIONAL ELECTRICAL CODE AND FOR LOCAL AUTHORITIES HAVING JURISDICTION.
- 3/4" CONDUIT MINIMUM, UNLESS OTHERWISE NOTED.
- ALL LIGHTING FIXTURES SHALL BE SECONDARY DISTRIBUTION WITH 500VTS SHALL BE PROVIDED BY CONTRACTOR.
- VERIFY LOCATION OF ALL DEVICES ON ARCHITECTURAL PLANS.
- MINTAIN A MAXIMUM 2% VOLTAGE DROP ON ALL LIGHTING HOMERUNS.
- ALL RAY SHOWN ARE 1/2" TO CENTER LINE OF OUTSIDE ABOVE ROOM FINISH, UNLESS OTHERWISE NOTED.
- CONTRACTOR SHALL PROVIDE ALL HOOKING BRACKETS, SUPPORTS, AND MOUNTING HARDWARE NECESSARY TO SUPPORT INSTALL LIGHTING FIXTURES.
- VERIFY THE EXACT ROUTING OF ALL EXPOSED CONDUIT WITH OWNER PRIOR TO INSTALLATION.
- COORDINATE WITH OTHER TRADES. OBTAIN ALL DRAWINGS THAT WILL REQUIRE COORDINATION AND PROVIDE ALL ELECTRICAL CONNECTIONS, LOCATION AND WIRING REQUIRED WHETHER SHOWN ON THE ELECTRICAL DRAWINGS OR NOT.
- PROVIDE CODE SIZED EQUIPMENT GRADING CONDUCTOR IN ALL LIGHTING CONCERN AREAS.
- GRANITE / STONE / VERMILY & MINERAL CONNECTION TO STORAGE PER VENDOR'S SHOP DRAWINGS. VERIFY EACH LOCATION, MOUNTING, ELEVATION AND BRANCH CIRCUIT REQUIREMENTS PRIOR TO ORDERING.
- ALL LIGHTING FIXTURES, EXCEPT EMERGENCY, SHALL BE CONTROLLED BY CONTRACTOR'S AUTOMATIC LIGHTING CONTROL SYSTEM AS REQUIRED BY CODES OF CALIFORNIA TITLE 24 REGULATIONS.

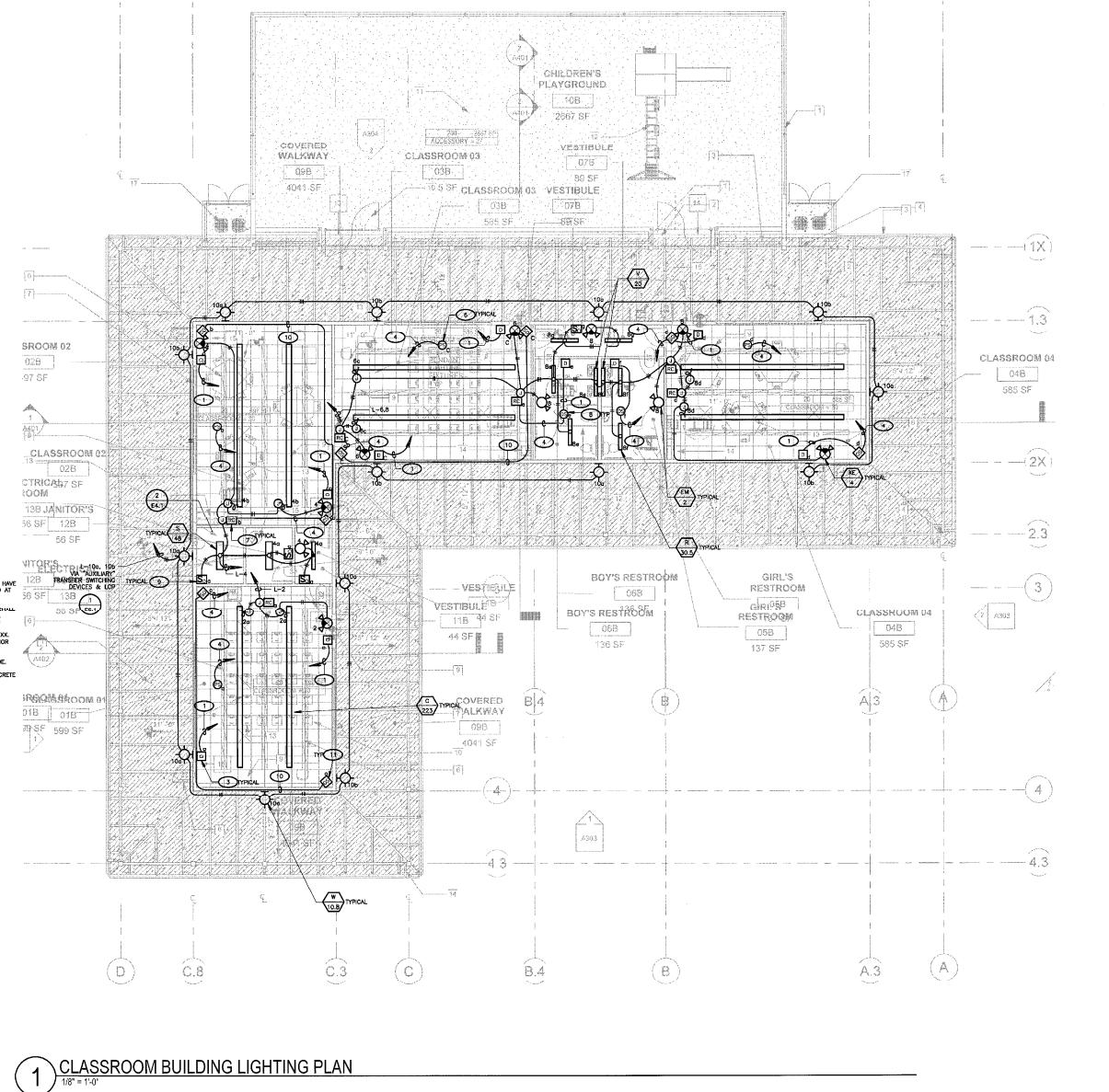
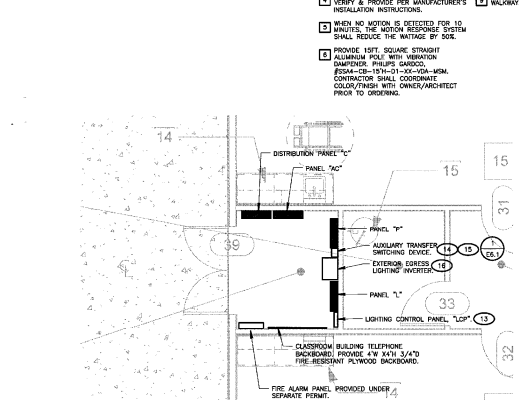
LIGHTING PLAN KEY NOTES

- PROVIDE 1" CONDUIT STUB WITH PLASTIC DIPPING TO ACCESSIBLE CEILING SPACE. (1) LABEL SERIES, PRE-TERMINATED CABLE FROM MAIN RACE TO ROOM CONTROLLER. COORDINATE WITH THE ROOM CONTROLLER MANUFACTURER'S INSTALLATION INSTRUCTIONS. CONTRACTOR SHALL FIELD VERIFY ALL REQUIRED CABLE LENGTHS.
- DUAL TECHNOLOGY CEILING MOUNT OCCUPANCY SENSOR. MOUNT TO 4" OCTAGONAL J-BOX. WATTSSTOPPER. LABEL-100. VERIFY & PROVIDE PER MANUFACTURER'S INSTALLATION INSTRUCTIONS.
- PROVIDE DIMMING WALL SWITCH. WATTSSTOPPER. LOW VOLTAGE DIMMING WALL SWITCH. J-BOX. 101-W. MOUNT IN STANDARD SINGLE GAGE J-BOX. VERIFY & PROVIDE PER MANUFACTURER'S INSTALLATION INSTRUCTIONS. CONTRACTOR SHALL FIELD VERIFY ALL REQUIRED CABLE LENGTHS.
- PROVIDE WATTSSTOPPER. LMRJ SERIES PRE-TERMINATED CABLE TO ROOM CONTROLLER. COORDINATE WITH THE ROOM CONTROLLER MANUFACTURER'S INSTALLATION INSTRUCTIONS. CONTRACTOR SHALL FIELD VERIFY ALL REQUIRED CABLE LENGTHS.
- PROVIDE RELAY ROOM CONTROLLER. LOCATE IN ACCESSIBLE CEILING SPACE. COORDINATE EXACT LOCATION WITH THE FIELD MOUNT TO J-BOX PER INSTALLATION INSTRUCTIONS. PROVIDE WATTSSTOPPER, J-BOX-212.
- PROVIDE DIGITAL PHOTOSENSOR. WATTSSTOPPER. J-BOX-100. VERIFY & PROVIDE PER MANUFACTURER'S INSTALLATION INSTRUCTIONS.
- PROVIDE RELAY ROOM CONTROLLER. LOCATE IN ACCESSIBLE CEILING SPACE. COORDINATE EXACT LOCATION WITH THE FIELD MOUNT TO J-BOX PER INSTALLATION INSTRUCTIONS. PROVIDE WATTSSTOPPER, J-BOX-211.
- ULTRASONIC CEILING MOUNT OCCUPANCY SENSOR. MOUNT TO 4" OCTAGONAL J-BOX. WATTSSTOPPER. J-BOX-100-2. VERIFY & PROVIDE PER MANUFACTURER'S INSTALLATION INSTRUCTIONS.
- PROVIDE 1" POLE. PER WALL CENTER SENSOR. PERMANENTLY BY WATTSSTOPPER. OR EQUAL. SEE FOR MANUAL ON OPERATION. SEE ENERGY TO MAXIMUM AND THE DELAY TO 30 MINUTES. VERIFY COLOR WITH ARCHITECT PRIOR TO ORDERING.
- PROVIDE WATTSSTOPPER. LMRJ SERIES PRE-TERMINATED CABLE BY 3/4" JACS. VERIFY & PROVIDE PER MANUFACTURER'S INSTALLATION INSTRUCTIONS. CONTRACTOR SHALL FIELD VERIFY ALL REQUIRED CABLE LENGTHS.
- DIGITAL DUAL TECH. CORNER MOUNT OCCUPANCY SENSOR. WATTSSTOPPER. J-BOX-100. VERIFY & PROVIDE PER MANUFACTURER'S INSTALLATION INSTRUCTIONS.
- PROVIDE EMERGENCY LIGHTING CONTROL UNIT LOCATE IN ACCESSIBLE CEILING SPACE. COORDINATE EXACT LOCATION WITH THE FIELD. MOUNT TO J-BOX. VERIFY & PROVIDE PER MANUFACTURER'S INSTALLATION INSTRUCTIONS. WATTSSTOPPER, J-BOX-200.
- PROVIDE WATTSSTOPPER. J-BOX-100/277 WITH (2) COULUM. POLE MOUNT MODULAR. LED-1 & (3) DUAL SINGLE-POLE RELAY MODULE. BUS-2.
- PROVIDE 20A AUXILIARY TRANSFER SWITCHING DEVICE. DUAL-LITE. INT8200. VERIFY & PROVIDE PER MANUFACTURER'S INSTALLATION INSTRUCTIONS. PROVIDE THREE. REFER TO DETAIL #1 ON E61.
- VERIFY & PROVIDE ALL REQUIRED POWER/CONTROL CONNECTIONS PER MANUFACTURER'S INSTALLATION INSTRUCTIONS.
- PROVIDE SERIAL 120V INPUT/OUTPUT. RAM-23-12-1/24-98.

LIGHT FIXTURE SCHEDULE

TYPE	WATTS	NO.	LAMP				VOLTAGE			REMARKS		
			TYPE	FLUOR.	INCAN.	LED	120V	240V	3P			
C	222	1	LED						PRINCIPAL LIGHTING	FRU11-50-LED33 R24-54A-1M-W-03- 2C-DMC	INDIRECT LIGHTING FIXTURE	2
R	303	1	LED						ALERIA LIGHTING	LMR-4-25-ME-L- RA-0A-X-120-X	RESTROOM & VESTIBULE EDGE FIXTURE	2
Y	16.8	1	LED						LUMINAIRE LED	WFL-590 18" 100 100 277-350K-DP- X	SPRINKLER BOINCIE	4
Y	40	1	LED						PRINCIPAL	PA0-LED33-LO- 4-TM-DM-01-1 SC-LM-X-M-X-X LW-4-35-ME-X-U -X	RESTROOM VANITY LIGHT 4" SURFACE MOUNTED	2
Z	40	1	LED						HUBBELL LIGHTING	EQF-X-1-2-135A- 6470-1M-1M-X-ED	POLE MOUNTED	4 2
FR	139	1	LED						GARCO	EQF-X-1-2-135A- 6470-1M-1M-X-ED	POLE MOUNTED	4 2
FR	139	1	LED						GARCO	EQF-X-1-2-135A- 6470-1M-1M-X-ED	POLE MOUNTED	4 2
FR	5	1	LED						DUAL LIFE	EV-4-4-02L	EMERGENCY LIGHT	2
YE	4	1	LED						EMERGENCY	TK800-G-U-	EXIT SIGN/ EMERGENCY LIGHT	2
L	303	1	LED						COLUMBIA LIGHTING	L401-22-35-M- G-ID-U	D2X LIGHT FIXTURE	2
RE	139	1	LED						GARCO	EQF-X-1-2-135A- 6470-1M-1M-X-ED	POLE MOUNTED	4 2
B15	19	1	LED						KIM LIGHTING	VSB1-15L-4K- 1W-X	POLE MOUNTED	2
B20	20	1	LED						KIM LIGHTING	VSB1-20L-4K- 1W-X	POLE MOUNTED	2
S	6	1	LED						LUXFER LIGHTING	SL-2-AED-4K- 12P-LIGHT	DOUBLE IMPACT STEP LIGHT	2
P22	139	1	LED						GARCO	EQF-X-1-2-135A- 6470-1M-1M-X-ED	POLE MOUNTED	4 2

- LIGHT FIXTURE SCHEDULE KEY NOTES**
- LIGHTING FIXTURE SHALL BE SUSPENDED SUCH THAT IT IS AFF.
 - CONTRACTOR SHALL COORDINATE COLOR/FINISH WITH ARCHITECT/OWNER UPON ORDERING.
 - PROVIDE 14FT. SQUARE STRAIGHT ALUMINUM POLE WITH VENTUR DAMPENER PHILIPS GARCO. #254-20-14V-81-VEN-100-81M CONTRACTOR SHALL COORDINATE COLOR/FINISH WITH OWNER/ARCHITECT PRIOR TO ORDERING.
 - PROVIDE 15FT. SQUARE STRAIGHT ALUMINUM POLE WITH VENTUR DAMPENER PHILIPS GARCO. #254-20-15V-81-VEN-100-81M CONTRACTOR SHALL COORDINATE COLOR/FINISH WITH OWNER/ARCHITECT PRIOR TO ORDERING.
 - PROVIDE 18FT. SQUARE STRAIGHT ALUMINUM POLE WITH VENTUR DAMPENER PHILIPS GARCO. #254-20-18V-81-VEN-100-81M CONTRACTOR SHALL COORDINATE COLOR/FINISH WITH OWNER/ARCHITECT PRIOR TO ORDERING.
 - PROVIDE 20A AUXILIARY TRANSFER SWITCHING DEVICE. DUAL-LITE. INT8200. VERIFY & PROVIDE PER MANUFACTURER'S INSTALLATION INSTRUCTIONS. PROVIDE THREE. REFER TO DETAIL #1 ON E61.
 - VERIFY & PROVIDE ALL REQUIRED POWER/CONTROL CONNECTIONS PER MANUFACTURER'S INSTALLATION INSTRUCTIONS.
 - PROVIDE SERIAL 120V INPUT/OUTPUT. RAM-23-12-1/24-98.



No.	Description	Date

FERRANTI ENGINEERING
CONSULTING
ELECTRICAL ENGINEERS
1211 MARICOPA HWY.,
SUITE 250
OJAI, CA 93023
(805) 705-4772
DALEFERRANTI@LIVE.COM

Stitch Studio
Contract: Jorge Escamilla
6022 Fernona Street
Ventura, California 93003
Direct: 818.523.7261
Email: stitchstudio3@gmail.com

FAITH COMMUNITY CHURCH
CLASSROOM BUILDING - CONSTRUCTION DOCUMENT PHASE

355 D Street, Fillmore CA.

CLASSROOM LIGHTING PLAN

PERMIT SUBMITTAL

E4.1

Scale: AS NOTED

**MECHANICAL
PLAN SHEET NOTES**

1. FIELD VERIFY MECHANICAL EQUIPMENT LOCATIONS.
2. ALL WORK SHALL BE COORDINATED WITH OTHER TRADES.
3. THE LOCATION OF ALL ROOF PENETRATIONS SHALL BE COORDINATED WITH THE ARCHITECTURAL AND MECHANICAL DRAWINGS.
4. PROVIDE ROOF JACKS AND PROTECTIVE SEAL ALL ROOF PENETRATIONS TO A LEAK FREE CONDITION.
5. THE FINAL CONNECTIONS TO EQUIPMENT SHALL BE LEAD-TIGHT FLEXIBLE METAL CONDUIT, INSTALL WITH ENOUGH SLACK TO PRECLUDE VIBRATION TRANSMISSION. SUPPORT SHALL BE PER THE NATIONAL ELECTRICAL CODE.
6. PROVIDE WEATHERSTRIP AND EXTERIOR RATED Gaskets IN ALL EXTERIOR AREAS.
7. PROVIDE ALL DEVICES AND CONNECTIONS AS REQUIRED ON MECHANICAL CONTRACTOR SHOP DRAWINGS AND APPROVED SUBMITTALS.
8. ALL DISCONNECTS SHALL BE MOUNTED ON UNBURY ON MECHANICAL (HMC) UNIT.
9. CONTRACTOR SHALL VERIFY LOCATION AND REQUIREMENTS OF ALL ELECTRICAL DEVICES PRIOR TO BID, ROUGH-IN, AND INSTALLATION.
10. CONTRACTOR SHALL, IN REVIEWING ALL CIRCUITS, IDENTIFY CONDUITS & CONDUIT SIZES TO ALLOW FOR VIBRATION EQUIP. SHOULD THE CONTRACTOR EXCEED ROUTING INDICATED ON DRAWINGS. ENGINEER OF RECORD MUST BE NOTIFIED PRIOR TO ANY DEVIATIONS FROM APPROVED PLAN CHECK (PERMITS SET) DRAWINGS.
11. EACH DISCONNECT OR STARTER AND A SEPARATE SET OF FUSES SHALL BE CONTRACTOR PROVIDED.
12. CONTRACTOR SHALL FINISH AND INSTALL PULL BOXES AS REQUIRED TO INSTALL CONDUCTORS PER CONDUIT MANUFACTURER'S RECOMMENDATIONS, PER THE NATIONAL ELECTRICAL CODE, AND PER LOCAL ADOPTEDS DRAWING.
13. 3/4" CONDUIT MINIMUM LEGN.
14. PROVIDE CODE SIZED EQUIPMENT GROUNDING CONDUCTORS IN ALL OCCUPIED CONDITS.
15. VERIFY AND PROVIDE CONTROLS TO ALL UNITS PER MECHANICAL CONTRACTOR APPROVED SHOP DRAWINGS AND SUBMITTALS.

KEY NOTES
(NOTE: THESE NOTES MAY NOT APPEAR ON ALL SHEETS)

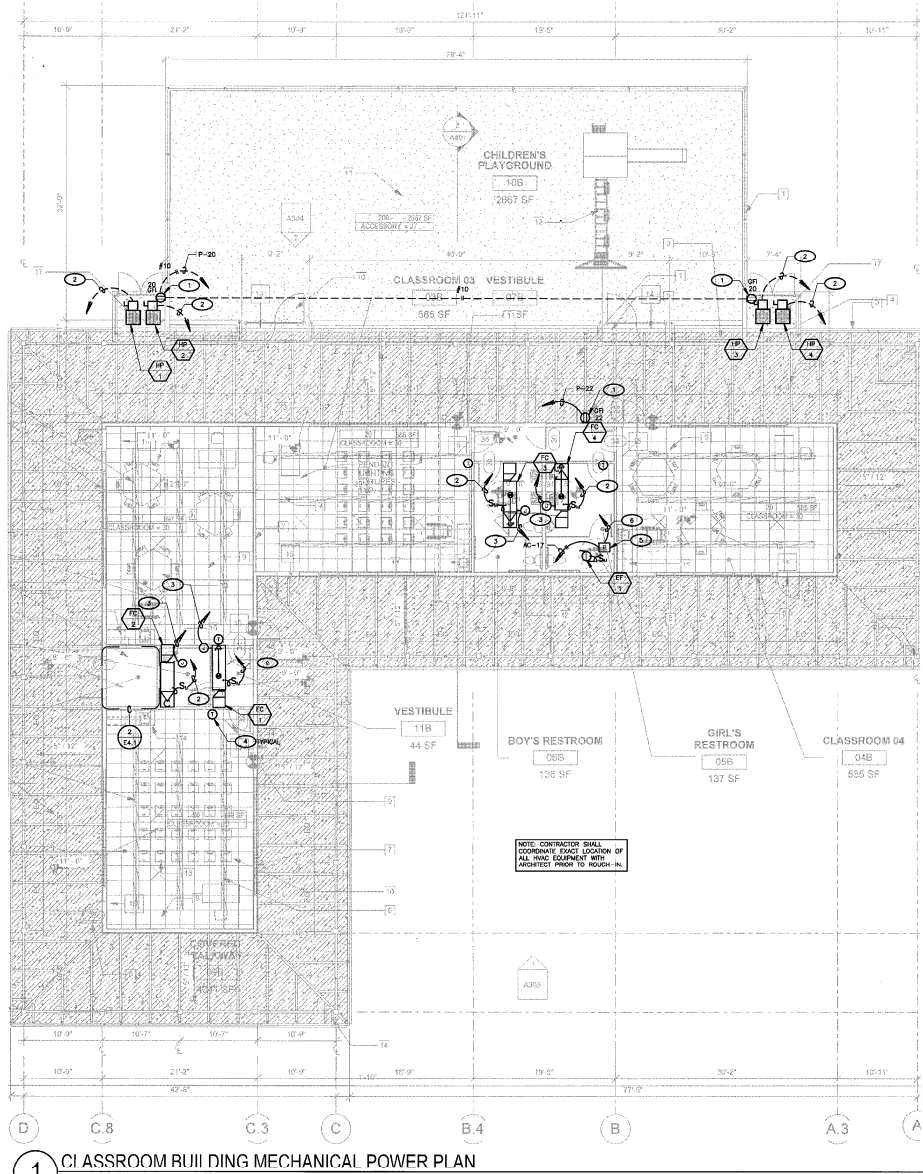
1. PROVIDE BELL EXTRA DUTY METAL WIRE-BUS COVER, 1" HANG VERTICAL. (SPEC TYPE: BELL #8881-0).
2. SEE ELECTRICAL SCHEDULE FOR MECHANICAL EQUIPMENT FOR DISCONNECT, FEEDER, FUSE ETC. REQUIREMENTS.
3. 1/2" & CABLE TO HMC GENERAL CONTRACTOR'S APPROVED SHOP DRAWINGS AND SUBMITTALS.
4. PROVIDE 45 BOX WITH SINGLE GANG PLASTER RING AND 1/2" CO. TO ACCESSIBLE CEILING SPACE (12" ABOVE CEILING) WITH PLASTIC BUSHING AT END. VERIFY EXACT THERMOSTAT LOCATION WITH MECHANICAL.
5. PROVIDE NEMA 1 GENERAL PURPOSE POWER RELAY, VERIFY & PROVIDE RELAY WITH PROPER COIL VOLTAGE, ETC. IN ORDER TO INTERLOCK EP-1 WITH FC-3. VERIFY & PROVIDE PER MECHANICAL CONTRACTOR'S APPROVED SHOP DRAWINGS AND SUBMITTALS.
6. 3/4" C. WITH ALL REQUIRED CONTROLS CABLED IN ORDER TO INTERLOCK EP-1 WITH FC-3. VERIFY & PROVIDE PER MECHANICAL CONTRACTOR'S APPROVED SHOP DRAWINGS AND SUBMITTALS.

ELECTRICAL SCHEDULE FOR MECHANICAL EQUIPMENT

TAG #	DESCRIPTION	H.P.	MCA	MOCD	VOLTAGE	PHASE	NEMA STARTER SIZE	240V DISCONNECT SIZE	RECOMMENDED FUSE SIZE	REMARKS	PANEL/BROUOT NO.	FEEDER
HP 1	SPLIT HEAT PUMP UNIT	---	19	30	240	1	---	NEMA 3R 30AS ZP	---	---	AC-2,4	1" C. 2#10 & 1#10 GND
HP 2	SPLIT HEAT PUMP UNIT	---	19	30	240	1	---	NEMA 3R 30AS ZP	---	---	AC-6,8	1" C. 2#10 & 1#10 GND
HP 3	SPLIT HEAT PUMP UNIT	---	19	30	240	1	---	NEMA 3R 30AS ZP	---	---	AC-1,3	1" C. 2#10 & 1#10 GND
HP 4	SPLIT HEAT PUMP UNIT	---	19	30	240	1	---	NEMA 3R 30AS ZP	---	---	AC-5,7	1" C. 2#10 & 1#10 GND
FC 1	FAN COOL.	1/2	---	15	240	1	---	MOTOR RATED SWITCH	---	---	AC-10,12	3/4" C. 2#12 & 1#12 GND
FC 2	FAN COOL.	1/2	---	15	240	1	---	MOTOR RATED SWITCH	---	---	AC-14,16	3/4" C. 2#12 & 1#12 GND
FC 3	FAN COOL.	1/2	---	15	240	1	---	MOTOR RATED SWITCH	---	---	AC-9,11	3/4" C. 2#12 & 1#12 GND
FC 4	FAN COOL.	1/2	---	15	240	1	---	MOTOR RATED SWITCH	---	---	AC-13,15	3/4" C. 2#12 & 1#12 GND
FC 5	PULSING CABINET EXHAUST FAN	---	---	---	120	1	---	---	---	320W	---	---
HP 5	SPLIT HEAT PUMP UNIT	---	19	30	240	1	---	NEMA 3R 30AS ZP	---	---	A-25,27	1" C. 2#10 & 1#10 GND
HP 6	SPLIT HEAT PUMP UNIT	---	19	30	240	1	---	NEMA 3R 30AS ZP	---	---	A-29,31	1" C. 2#10 & 1#10 GND
FC 6	FAN COOL.	1/2	---	15	240	1	---	MOTOR RATED SWITCH	---	---	A-33,35	3/4" C. 2#12 & 1#12 GND
FC 7	FAN COOL.	1/2	---	15	240	1	---	MOTOR RATED SWITCH	---	---	A-37,35	3/4" C. 2#12 & 1#12 GND

ELECTRICAL SCHEDULE FOR MECHANICAL EQUIPMENT KEY NOTES

1. INTERLOCK WITH SUPPLY AIR FAN OF FC-3.
2. CLASSROOM BUILDING HMC EQUIPMENT.
3. SANCTUARY LOBBY ADDITION EQUIPMENT. REFER TO SHEET 45-0 FOR WORK ASSOCIATED WITH THIS EQUIPMENT.

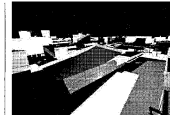


1 CLASSROOM BUILDING MECHANICAL POWER PLAN
1/8" = 1'-0"

No.	Description	Date

Project number: 130811.44
Date: 6/9/2020
Drawn by: G. GARCIA
Checked by: D. FERRANTI

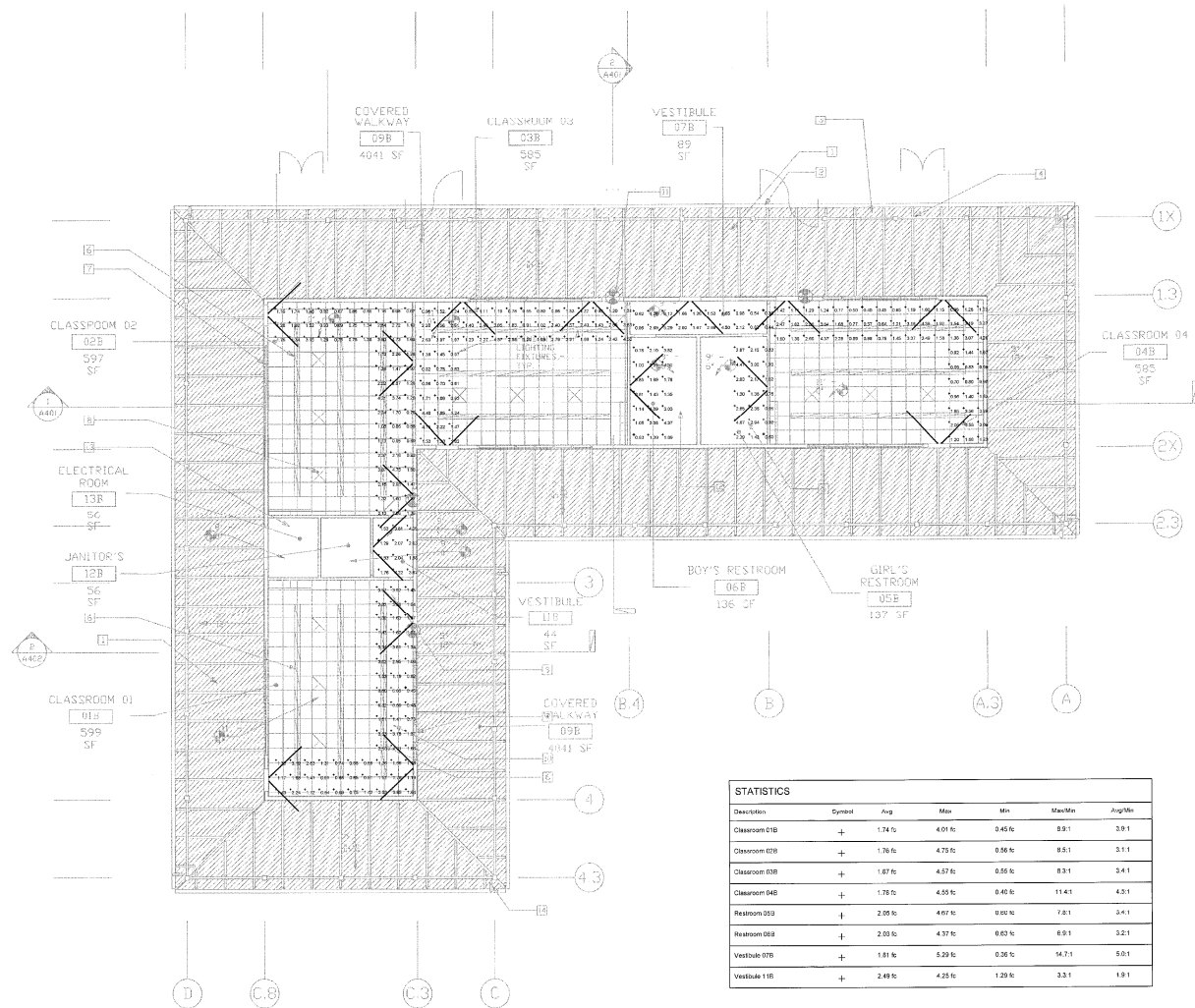
FERRANTI ENGINEERING
CONSULTING
ELECTRICAL ENGINEERS
1211 MARIPOSA HWY.,
SUITE 250
OJAI, CA 93023
(805) 705-4772
DALEFERRANTI@LIVE.COM



Stitch Studio
Contact: Jorge Escamilla
4002 Pomona Street
Ventura, California 93003
Direct: 818.823.7281
Email: stitchstudio54@gmail.com

FAITH COMMUNITY CHURCH
CLASSROOM BUILDING - CONSTRUCTION DOCUMENT PHASE
355 D Street, Fillmore CA.
CLASSROOM BUILDING
MECHANICAL POWER PLAN

PERMIT SUBMITTAL
E4.2
Scale: AS NOTED



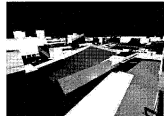
STATISTICS						
Description	Symbol	Avg	Max	Min	Max/Min	Avg/Min
Classroom 01B	+	1.74 ft	4.01 ft	0.45 ft	89.1	3.91
Classroom 02B	+	1.76 ft	4.75 ft	0.36 ft	85.1	3.11
Classroom 03B	+	1.87 ft	4.57 ft	0.58 ft	83.1	3.41
Classroom 04B	+	1.78 ft	4.55 ft	0.46 ft	114.1	4.31
Restroom 003	+	2.05 ft	4.67 ft	0.90 ft	78.1	3.41
Restroom 009	+	2.00 ft	4.37 ft	0.63 ft	69.1	3.21
Vestibule 07B	+	1.81 ft	5.29 ft	0.36 ft	14.71	5.01
Vestibule 11B	+	2.48 ft	4.25 ft	1.29 ft	33.1	1.91

1 CLASSROOM BUILDING PATH OF EGRESS PHOTOMETRIC PLAN
1/8" = 1'-0"

No.	Description	Date

Project number 130811.44
Date 6/9/2020
Drawn by G.GARCIA
Checked by D.FERRANTI

FERRANTI ENGINEERING
CONSULTING
ELECTRICAL ENGINEERS
1211 MARICOPA HWY,
SUITE 250
OJAI, CA 93023
(805) 705-4772
DALEFERRANTI@LIVE.COM



Stitch Studio
Contact: Jorge Escamilla
4082 Pomona Street
Ventura, California 95003
Direct: 838.853.7201
Email: stitchstudio3d@gmail.com

FAITH COMMUNITY CHURCH
CLASSROOM BUILDING - CONSTRUCTION DOCUMENT PHASE

355 D Street, Fillmore CA.

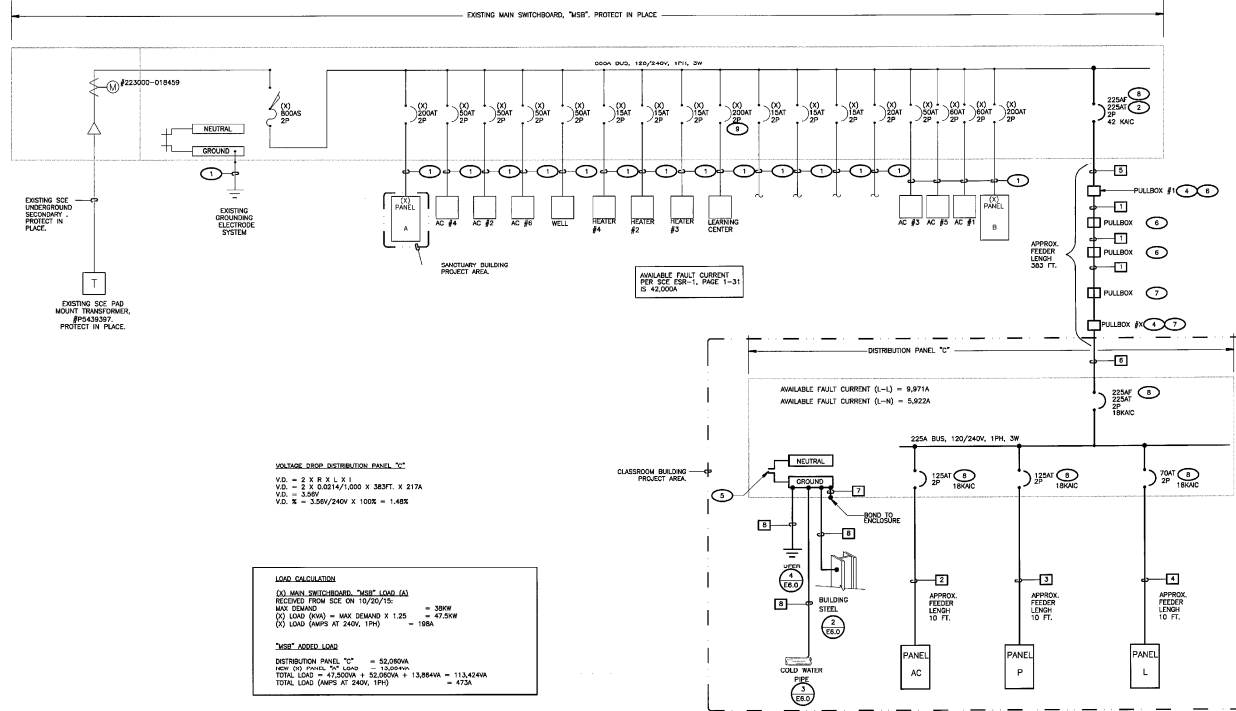
CLASSROOM BUILDING PATH OF EGRESS PHOTOMETRIC PLAN

PERMIT SUBMITTAL

E4.3

Scale AS NOTED

FEEDER SCHEDULE			
TAG	CONDUIT/CONDUCTOR	FROM	TO
1	(3) 3" CMC EACH WITH 3#300 MCM @ 1#2/0 GND	PULLBOX #1	PULLBOX #X
2	1-1/2" CMC 3#1 @ 1#0 GND	PANEL A	PANEL AC
3	1-1/2" CMC 3#1 @ 1#0 GND	PANEL C	PANEL P
4	1" CMC 3#4 @ 1#0 GND	PANEL C	PANEL L
5	3" 3#300 MCM @ 1#2 GND	MSB	PULLBOX #1
6	3" 3#300 MCM @ 1#2 GND	PULLBOX #X	PANEL C
7	1#1/0	---	---
8	1" CMC 1#1/0	---	---
9	---	---	---
10	---	---	---
11	---	---	---
12	---	---	---



VOLTAGE DROP DISTRIBUTION PANEL "D"
 $V_D = 2 \times R \times L \times I$
 $V_D = 2 \times 0.0214/1000 \times 3837 \times 2174$
 $V_D = 3.58V$
 $V_D \% = 3.58/240V \times 100\% = 1.48\%$

LOAD CALCULATION
 (1) MAIN SWITCHBOARD "MSB" LOAD (A)
 RECEIVED FROM SIZE ON 10/20/15 = 390W
 MAX DEMAND = MAX DEMAND X 1.25 = 47.50W
 (2) LOAD (Amps) AT 240V, 1PH = 198A
 "MSB" ADDED LOAD
 DISTRIBUTION PANEL "D" = 52,060VA
 NEW (D) PANEL "D" LOAD = 13,200VA
 TOTAL LOAD = 65,260VA X 0.85 POWER F = 13,884VA = 113,424VA
 TOTAL LOAD (AMPS AT 240V, 1PH) = 473A

1 SINGLE LINE DIAGRAM
 SCALE: NOT TO SCALE

I.E.M CONTACTS		
TOM RETENMAIER	SALES EXECUTIVE	(OFFICE) (CELL) TOM.RETENMAIER@FERRANTIENGINEERS.COM (E-MAIL)

SHEET NOTES

- VERIFY LOCATION OF ALL BUILDINGS AND APPENDICES ON ARCHITECTURAL AND CIVIL PLANS.
- CONTRACTOR SHALL VERIFY LOCATION & REQUIREMENTS OF ALL DEVICES/EQUIPMENT REQUIRING ELECTRICAL CONNECTION PRIOR TO BID PROPOSAL. (SEE 101.01.01, 101.01.02)
- CONTRACTOR SHALL IN ROUTING ALL CIRCUITS, INCREASE CONDUCTOR & CONDUIT SIZE TO ALLOW FOR VOLTAGE DROP. (SEE 101.01.01 ON DRAWINGS. ENGINEER OF RECORD SHALL BE RESPONSIBLE FOR VERIFYING DEVIATIONS FROM APPROVED PLAN CHECK (PERMIT SET) DRAWINGS.
- ALL 90 DEGREE CONDUIT BENDS AND RISERS SHALL BE PVC COATED RIGID STEEL.
- VERIFY LOCATION OF ALL EQUIPMENT ON ARCHITECTURAL AND CIVIL PLANS.
- PROVIDE COPR. SIZED EQUIPMENT GROUNDING CONDUCTORS IN ALL OCCUPIED CONDUITS.
- 1" CONDUIT MINIMUM UNDERGROUND.
- COORDINATE WORK WITH OTHER TRADES. OBTAIN ALL PERMITS THAT MAY BE REQUIRED. COORDINATION AND PROVIDE ALL ELECTRICAL CONNECTIONS, DEVICES, AND WIRING REQUIRED. WHETHER SHOWN ON THE ELECTRICAL DRAWINGS OR NOT.
- CONTRACTOR SHALL FURNISH AND INSTALL PULL BOXES AS REQUIRED TO INSTALL CONDUCTORS PER CONDUCTOR MANUFACTURER'S RECOMMENDATIONS, PER THE NATIONAL ELECTRICAL CODE, AND PER LOCAL AUTHORITIES HAVING JURISDICTION.
- FIELD CONDITIONS GOVERN DEMOLITION AND NEW CONSTRUCTION. CONTRACTOR SHALL VERIFY ACTUAL CONDITIONS PRIOR TO START OF WORK. THE ARCHITECT/OWNER SHALL BE ADVISED OF POSSIBLE FIELD PROBLEMS PRIOR TO COMMENCEMENT.
- ALL EMPTY CONDUITS SHALL BE PROVIDED WITH DEMOLITION FROM FULL STRIP.
- CONTRACTOR SHALL FIELD VERIFY LOCATION OF ALL UNDERGROUND UTILITIES PRIOR TO ANY DEMOLITION OR TRENCHING. CONTRACTOR SHALL PROTECT ALL EXISTING/REMAINING UTILITIES IN PLACE. DEMOLITION AT HIS SOLE RISK. CONTRACTOR SHALL REPAIR ANY UTILITIES DAMAGED DURING CONSTRUCTION.
- UNLESS NOTED OTHERWISE, ALL DEVICES AND TERMINATIONS SHALL BE RATED FOR 75 DEGREES CELSIUS.
- ALL CONDUCTORS 1/2" AND SMALLER SHALL BE THIN/THIN EQ. ALL CONDUCTORS 3/4" AND LARGER SHALL BE XHHW-2 CU.
- PER SEC 110.14, SERVICE EQUIPMENT SHALL BE LEGALLY MARKED IN THE FIELD WITH THE MAXIMUM AVAILABLE FAULT CURRENT (THE FIELD AMPERES) SHALL INCLUDE THE DATE THE FAULT CURRENT CALCULATION WAS PERFORMED AND BE OF SUFFICIENT DURABILITY TO WITHSTAND THE ENVIRONMENT INVOLVED.
- PER SEC 110.16, ELECTRICAL EQUIPMENT, SUCH AS SWITCHES, PANELS, CONTROL PANELS, METER SOCKET ENCLOSURES, AND MOTOR CONTROL CENTERS SHALL BE FIELD MARKED TO MARK QUALIFIED PERSONS OF POTENTIAL ELECTRIC AND FLAME HAZARD. THE MARKING SHALL BE LOCATED BY THE INSTALLER PRIOR TO ANY WORK BEING PERFORMED. EXAMINATION, ADJUSTMENT, SERVICING, OR MAINTENANCE OF THE EQUIPMENT.

KEY NOTES

- (NOTE: THESE NOTES MAY NOT APPLY ON ALL SHEETS)
- EXISTING FEEDER. PROTECT IN PLACE.
 - PROVIDE CIRCUIT BREAKERS IN EXISTING SPACE. PROVIDE ALL NECESSARY REQUIREMENTS IN WELLS OR EXISTING ULTIMATE COMPANY AVAILABLE FAULT CURRENT.
 - NOT ALL PULLBOXES ARE SHOWN ON SINGLE LINE DIAGRAM. REFER TO SITE ELECTRICAL PLAN & SANCTUARY REQUIREMENTS.
 - PROVIDE POLARS IF SERIES CONNECTIONS IN PULLBOX IN ORDER TO TRANSITION FROM SINGLE SET OF CONDUCTORS TO PARALLEL SET OF CONDUCTORS.
 - DISCONNECT & REMOVE LINK BETWEEN NEUTRAL & GROUND, IF PRESENT.
 - LOCATED IN ACCESSIBLE CEILING SPACE OF SANCTUARY. REFER TO SANCTUARY ELECTRICAL PLAN ON E10, FOR MORE INFORMATION.
 - EXTERIOR IN-SHAFT PULLBOX. REFER TO SITE ELECTRICAL PLAN, ON E10, FOR MORE INFORMATION.
 - PROVIDE GENERAL ELECTRIC CIRCUIT BREAKER.
 - THIS CIRCUIT BREAKER SHALL BECOME SPARE UNDER A SEPARATE PERMIT AFTER DEMOLITION AND REPAIRS OF LEARNING CENTER IS COMPLETE. THIS CIRCUIT BREAKER SHALL THEN BE MARKED AS "FUTURE SOLAR ELECTRICAL".

No.	Description	Date

Project number 130911.44
 Date 6/5/2020
 Drawn by G.GARCIA
 Checked by D.FERRANTI

FERRANTI ENGINEERING
 CONSULTING ELECTRICAL ENGINEERS
 1211 MARICOPA HWY, SUITE 250
 OJAIL CA 93023
 (805) 705-4772
 DALEFERRANTI@LIVE.COM



Stitch studio
 Contact: Jorge Escamilla
 4082 Pomona Street
 Ventura, California 93003
 Direct: 818.523.7201
 Email: stitchstudio@gmail.com

FAITH COMMUNITY CHURCH
 CLASSROOM BUILDING - CONSTRUCTION DOCUMENT PHASE

355 D Street, Fillmore CA.

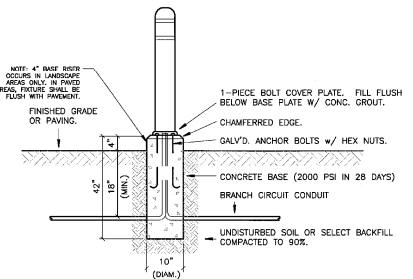
SINGLE LINE DIAGRAM

PERMIT SUBMITTAL

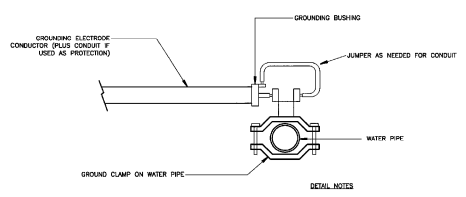
E5.0

Scale AS NOTED

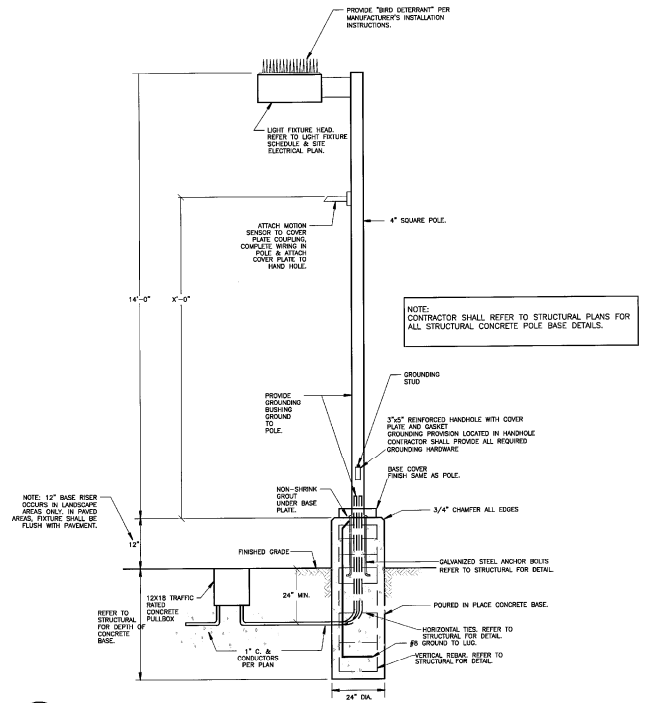
9/30/2015 11:13:31 AM



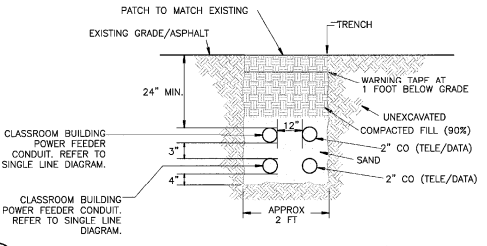
6 TYPICAL BOLLARD LIGHT MOUNTING DETAIL
NOT TO SCALE



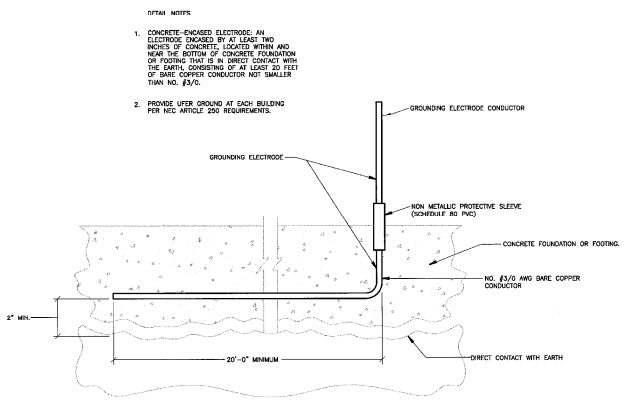
3 METAL PIPE GND
NOT TO SCALE



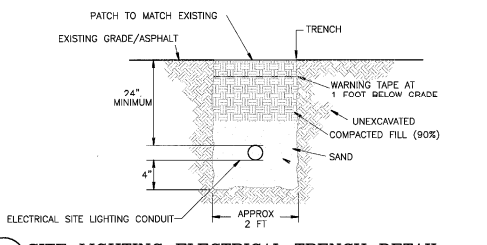
1 TYPICAL POLE LIGHT DETAIL
NOT TO SCALE



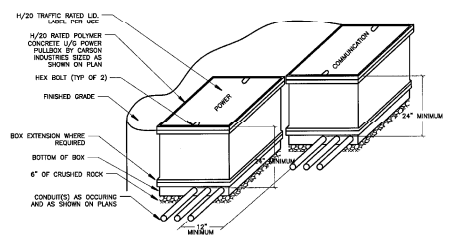
7 CLASSROOM BUILDING POWER & COMM TRENCH DETAIL
NOT TO SCALE



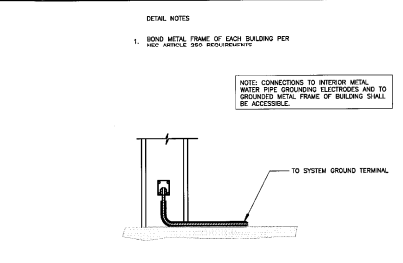
4 UFER GROUND DETAIL
NOT TO SCALE



8 SITE LIGHTING ELECTRICAL TRENCH DETAIL
NOT TO SCALE



5 TYPICAL PULL BOX DETAIL
SCALE: NOT TO SCALE



2 METAL FRAME GROUND
NOT TO SCALE

No.	Description	Date

Project number: 130911.44
Date: 6/9/2020
Drawn by: G.GARCIA
Checked by: D.FERRANTI

FERRANTI ENGINEERING
CONSULTING ELECTRICAL ENGINEERS
1211 MARICOPA HWY., SUITE 250
OJAI, CA 93023
(805) 705-4772
DALEFERRANTI@LIVE.COM



Stitch Studio
Contact: Jorge Escarilla
4882 Pomona Street
Ventura, California 93003
Phone: 818.923.7201
Email: stitchstudio3d@gmail.com

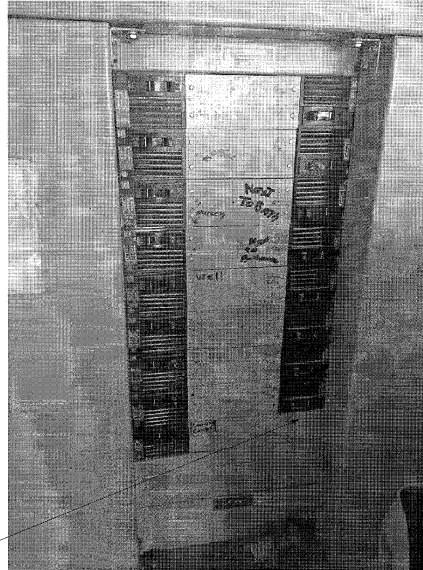
FAITH COMMUNITY CHURCH
CLASSROOM BUILDING - CONSTRUCTION DOCUMENT PHASE
355 D Street, Fillmore CA.

PERMIT SUBMITTAL

E6.0

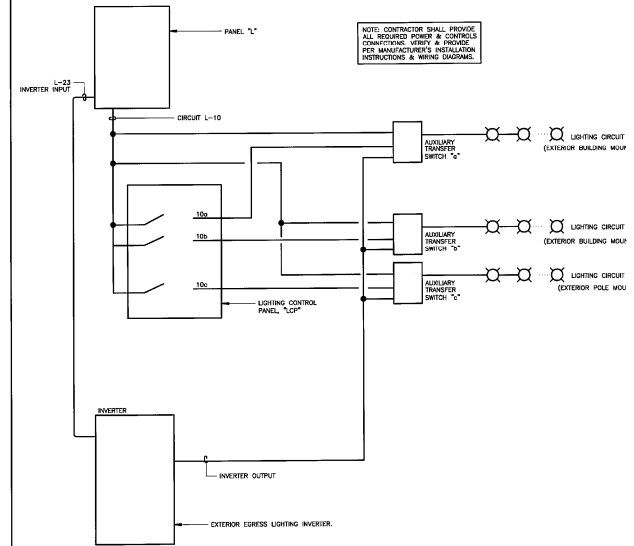
DETAILS Scale AS NOTED

9/30/2015 11:11:33 AM



EXISTING SPACE FOR NEW CLASSROOM BUILDING CIRCUIT BREAKER.

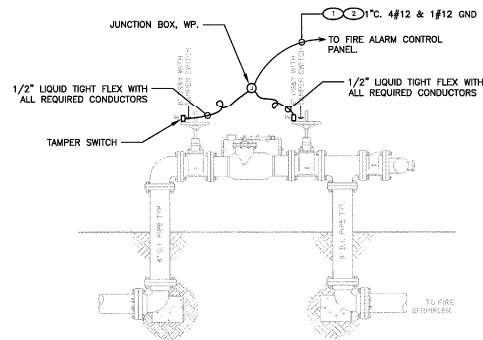
3 EXISTING MAIN SWITCH BOARD DISTRIBUTION
NOT TO SCALE



1 TYPICAL AUXILIARY SWITCHING DEVICE WIRING DIAGRAM
NOT TO SCALE

DETAIL KEYNOTES

- 1 CONTINUOUS SHALL BE SPICES LABELED BY CONTRACTOR, COORDINATE EXACT LOCATION WITH OWNER.
- 2 VERIFY & PROVIDE CABLING PER FIRE ALARM VENDOR'S REQUIREMENTS.



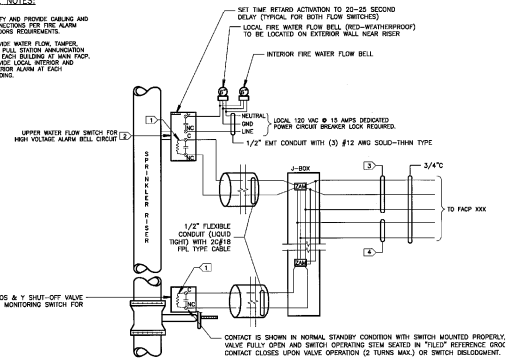
4 TYPICAL FIRE SPRINKLER BACKFLOW WIRING DIAGRAM
SCALE: NOT TO SCALE

DETAIL KEY NOTES:

- 1 INSTALL END OF LINE RESISTOR (3-3K OHMS 1 WATT).
- 2 CONTACTS ARE SHOWN IN NORMAL STANDBY CONDITION WITH SWITCH MOUNTED PROPERLY AND RESET REL. CONTACTS CLOSE UPON WATER FLOW.
- 3 5/16" #18 AND FPL TYPE CABLE.
- 4 3/4" #14 AND FPL TYPE CABLE.

DETAIL NOTES:

- 1 VERIFY AND PROVIDE CABLING AND CONNECTIONS FOR FIRE ALARM VENDOR'S REQUIREMENTS.
- 2 PROVIDE WATER FLOW, TAMPERS AND FPL STATUS INDICATION FOR EACH BRANCH OF MAIN Riser. PROVIDE LOCAL INTERIOR AND EXTERIOR ALARM AT EACH BUILDING.



2 SPRINKLER RISER WITH OSY VALVE WIRING DIAGRAM
SCALE: NOT TO SCALE

No.	Description	Date

Project number 130911.44
Date 6/9/2020
Drawn by G. GARCIA
Checked by D. FERRANTI

FERRANTI ENGINEERING
CONSULTING ELECTRICAL ENGINEERS
1211 MARICOPA HWY., SUITE 250
OJAI, CA 93023
(805) 705-4772
DALEFERRANTI@LIVE.COM



Stitch Studio
Contact: Jorge Escamilla
4025 Bonoma Street
Ventura, California 93003
Direct: 818.523.7261
Email: stitchstudio34@gmail.com

FAITH COMMUNITY CHURCH
CLASSROOM BUILDING - CONSTRUCTION DOCUMENT PHASE
355 D Street, Fillmore CA.

PERMIT SUBMITTAL

E6.1

DETAILS

Scale AS NOTED